



Product Catalogue

Version 1 | armorgard.com.au
armorgard.co.nz



Welcome

To the latest edition of the Armorgard product catalogue. This catalogue includes our extensive range of market-leading solutions for on-site security, safety and productivity. All of our products are exclusive to Armorgard and come from the work of our talented in-house R&D team. Our latest innovations are used as essential solutions for H&S best practice. You won't find the same products anywhere else and you certainly won't find better.

For help, advice and to place orders, contact our team:

 Call us on **1300 131 751**
or email sales@armorgard.com.au
armorgard.com.au

 Call us on **04 280 6440**
or email sales@armorgard.co.nz
armorgard.co.nz



ISO 9001:2015



The images used throughout are for the purpose of illustration and reference only. Content may not be included as standard. Please note that dimensions are approximate.



What we stand for...



Our vision

To supply and produce innovative solutions to increase safety and productivity in workplaces all over the world.



Our mission

Design and manufacture market-leading products for secure tool storage, efficient manual handling and improved site safety.



Our values (SHAPE)

Supportive

- We treat our colleagues and our customers with respect
- We work as a team to ensure success



Honest

- We are clear in all communication, providing assurance to our customers and colleagues
- We build trust with all of our customers and colleagues through managing expectations



Accountable

- We do what we say we will do
- We are accountable as a team and as individuals



Passionate

- We strive to be positive role models, demonstrating passion for our business
- We are inquisitive and open to new ideas



Excellence

- We aim to exceed expectations through our performance
- We always aim higher for our customers



» robust » secure » trusted



We look at things from a different angle

Every product is developed in response to a need. We listen to all customers and create the perfect solutions to their problems.

Our team continue to develop excellent new products that are tough, dependable and purpose-built for your needs. Plus, we won't keep you waiting. We pride ourselves on our high stock levels and next day delivery on all stock items.

If you have an idea for a new product or feedback on an existing one, we'd love to hear from you. Please send us an email to discuss your ideas.



Replacement keys & parts available. See page 80



“Our product team is continually developing new ideas – tough, dependable products.”

Contents

SECTION 01

Tool and equipment storage

strongbank™	10
tuffbank™	12
oxbox™	16
trekdor™	18
barrobox™	22
tuffstor cabinet™	24

SECTION 02

Work platforms and units

instagate™	40
instructahut™	42
tuffbench™	43
mobile tuffbench™	44
cuttingstation™	46
sitestation™	50

SECTION 03

Welfare range

scrubkart™	52
sanistation™	54
sanistation mini™	56

SECTION 04

Manual handling products

piperrack™	63
bundlerack™	66
loadall™	67
rubble truck™	72

SECTION 05

Hazardous goods storage

tuffcage™	80
gorilla gas cage™	81

SECTION 06

Replacement keys and parts	82
----------------------------	----

fittingstor™	26
pipestor™	30
forma-stor™	33
strimmersafe vault™	36
strimmersafe rack™	37

flexikart™	74
v-kart™	76
beamkart™	76
turntable truck™	77



SECTION 01 TOOL AND EQUIPMENT STORAGE



SECTION 01 Tool and equipment storage

strongbank™	10
tuffbank™	12
oxbox™	16
trekdor™	18
barrobox™	22
tuffstor cabinet™	24
fittingstor™	26
pipestor™	30
forma-stor™	33
strimmersafe vault™	36
strimmersafe rack™	37

armorgard strongbank™

The ultra-strong range of tool safes

StrongBank™ – the world's toughest strongbox. When we started out, our goal was to design and build the ultimate secure storage box. The result was **StrongBank™**. Now, more than 30 years later, there is still nothing on the market that compares.

This state-of-the-art strongbox delivers virtually indestructible performance to deter even the most determined thief.

» "IT IS QUITE SIMPLY WITHOUT RIVAL."

» OPTIONAL EXTRAS



HEAVY-DUTY CASTORS USING THE PRE-DRILLED HOLES (EXCEPT SB1)



REINFORCED LID INCLUDING CORNER BRACE FOR EXTRA SECURITY



KEYED ALIKE 5-LEVER DEADLOCKS BOTH SIDES WITH HEAVY-DUTY CHUBB-STYLE KEYS

UNIQUE EXTERNAL AND INTERNAL ANTI-JEMMY SYSTEMS AND FULLY WELDED CONTINUOUS PIANO HINGE



STRONG GAS STRUTS AND SLAMSTOP LID STAY FITTED AS STANDARD - CONFORMS TO INDUSTRY STANDARDS

POWDER COATED FOR MAXIMUM DURABILITY

FORK SKIDS WITH FIXING SLOTS FOR EASILY ADDING CASTORS (EXCEPT SB1)

ROBUST CONSTRUCTION FROM 2 & 3MM HEAVY-DUTY STEEL PLATE WITH 5MM REINFORCEMENTS

SUITABLE FOR VANS, TRUCKS, WORKSHOPS AND SITES

» For on-site solutions, call our customer experience team.

SB1

SB3

SB2

SB6

480mm



SB1

665mm



SB2

970mm



SB3

665mm



SB6

Product Code	Description	Weight (kg)	External Dimensions W x D x H (mm)	Internal Dimensions W x D x H (mm)
SB1	Van Box	59	1030 x 565 x 480	895 x 460 x 470
SB2	Site Box 4x2x2	98	1310 x 690 x 665	1185 x 605 x 575
SB3	Site Box 4x3x2	120	1300 x 690 x 970	1185 x 600 x 880
SB6	Truck Box 6x2x2	138	2000 x 690 x 665	1885 x 605 x 580

Note: Weights and dimensions are approximate. External dimensions include handles.

TOOL AND EQUIPMENT STORAGE

armorgard tuffbank™

Our best-selling secure site storage solution

Built to a rigorous specification with a host of innovative features, TuffBank™ sets the industry benchmark for quality and functionality. A Sold Secure and Secured by Design accredited product, its heavy-duty steel plate construction and unique anti-jemmy technology means that it is virtually impregnable.

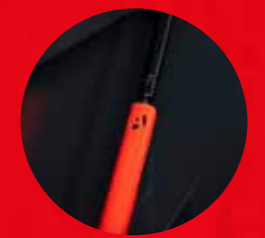
» TURN OVER FOR MORE INFORMATION ABOUT THE TUFFBANK™



KEYED ALIKE 5-LEVER DEADLOCKS BOTH SIDES WITH HEAVY-DUTY CHUBB-STYLE KEYS



CABLE PASSING POINT TO ALLOW CHARGING WITHOUT COMPROMISING SECURITY



STRONG GAS STRUTS AND SLAMSTOP LID STAY FITTED AS STANDARD - CONFORMS TO INDUSTRY STANDARDS



UNIQUE EXTERNAL AND INTERNAL ANTI-JEMMY SYSTEMS AND FULLY-WELDED CONTINUOUS PIANO HINGE

INSET HANDLES FOR A MORE STREAMLINED PRODUCT REQUIRING LESS SPACE

OPTIONAL SHELVES FOR CONVENIENT STORAGE OF SMALLER ITEMS

ROBUST CONSTRUCTION FROM HEAVY-DUTY STEEL PLATE THROUGHOUT

TBC4

FORKSKIDS WITH FIXING SLOTS FOR EASILY ADDING CASTORS (EXCEPT TB1 AND TB12)

FULL RANGE IS SUITABLE FOR VANS, TRUCKS, WORKSHOPS AND SITES

POWDER COATED FOR MAXIMUM DURABILITY

TOOL AND EQUIPMENT STORAGE

TB2



» OPTIONAL EXTRAS



UNIQUE POWERSHELF SECURELY CHARGES TOOLS AND MOBILE DEVICES



LIFTING EYES TO ALLOW FOR TRANSIT BY CRANE



HEAVY-DUTY CASTORS INCREASE MOVABILITY ON-SITE



» WATCH THE TUFFBANK™ IN ACTION

» MARKET-LEADING TOOL VAULT
OFFERING BEST-IN-CLASS
PERFORMANCE

armorgard
tuffbank™



TB1



TB2



TB21



TB3



TB12

TB6



TBC4



TBC5



Product Code	Description	Weight (kg)	External Dimensions W x D x H (mm)	Internal Dimensions W x D x H (mm)
TB1	Van Box	50	950 x 505 x 460	920 x 470 x 450
TB12	Truck Box	58	1150 x 495 x 460	1120 x 470 x 450
TB21	Site Box	60	760 x 615 x 640	730 x 590 x 540
TB2	Site Box 4x2x2	80	1150 x 615 x 640	1120 x 590 x 540
TB3	Site Box 4x3x2	97	1150 x 615 x 930	1120 x 590 x 840
TBC4	Site Chest 4x4x2	127	1150 x 615 x 1265	1120 x 590 x 1175
TBC5	Site Chest 5x4x2	153	1525 x 615 x 1265	1495 x 590 x 1175
TB6	Truck Box 6x2x2	119	1925 x 615 x 640	1895 x 590 x 540
CLEK	Lifting Eye Kit	2	N/A	N/A
TBS4	TuffBank™ Shelf	3	1100 x 150 x 95	1095 x 145 x 25
TBDS4	TuffBank™ Deep Shelf	4	1100 x 250 x 95	1095 x 245 x 25
TBDS5	TuffBank™ Deep Shelf	6	1460 x 250 x 95	1455 x 245 x 25
TBS4P	TuffBank™ PowerShelf	6	1100 x 150 x 95	1095 x 145 x 25
TBDS4P	TuffBank™ Deep PowerShelf	6	1100 x 250 x 95	1095 x 245 x 25
TBDS5P	TuffBank™ Deep PowerShelf	8	1460 x 250 x 95	1455 x 245 x 25

*Optional shelves available for on-site chests, see page 81. Note: Weights and dimensions are approximate. External dimensions include handles.

TOOL AND EQUIPMENT STORAGE

armorgard oxbox™

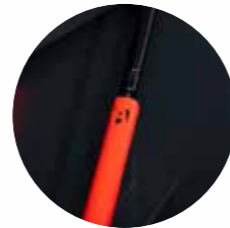
The robust, good value solution for securing tools and equipment

OxBox™ tool vaults provide a fantastic combination of security and affordability. OxBox™ shares many of the premium features of our higher priced storage box ranges, including locks, hinges, gas struts and paint finish. Its unique "folded" construction delivers outstanding strength. Made from 1.5mm and 2.0mm steel, the OxBox™ is available in 6 sizes.

STEEL PLATE CONSTRUCTION WITH DURABLE POWDER COATED FINISH



KEYED ALIKE 5-LEVER DEADLOCKS BOTH SIDES WITH HEAVY-DUTY CHUBB-STYLE KEYS



STRONG GAS STRUTS FITTED AS STANDARD - CONFORMS TO INDUSTRY STANDARDS

SUITABLE FOR VANS, TRUCKS, WORKSHOPS AND SITES

OPTIONAL EXTRAS



HEAVY-DUTY CASTORS USING THE PRE-DRILLED HOLES (EXCEPT OX05, OX1, OX2 AND OX6)

FORK SKIDS WITH FIXING SLOTS FOR EASILY ADDING CASTORS (EXCEPT OX1, OX2 AND OX6)

For on-site solutions, call our customer experience team.

» "EFFECTIVE SECURITY - GREAT VALUE"



Product Code	Description	Weight (kg)	External Dimensions W x D x H (mm)	Internal Dimensions W x D x H (mm)
OX05	Van Box	27	810 x 470 x 385	755 x 425 x 370
OX1	Van Box	32	885 x 470 x 450	830 x 425 x 435
OX2	Truck Box	41	1155 x 450 x 460	1130 x 425 x 445
OX3	Site Box 4x2x2	60	1210 x 625 x 645	1115 x 595 x 550
OX4	Site Chest 4x4x2	89	1215 x 595 x 1185	1125 x 570 x 1090
OX6	Truck Box	60	1740 x 515 x 445	1715 x 485 x 430

*Optional shelves available for on-site chests, see page 81. Note: Weights and dimensions are approximate. External dimensions include handles.



Our range of robust steel tool drawers for vehicles and small spaces

TrekDorr™ offers ultimate versatility to keep everything tidy and organised in your vehicle; from your power tools right down to that 5mm screwdriver. TrekDorr™ units are designed to fit neatly into smaller spaces and can be fixed down. Each TrekDorr™ is cased in corrugated steel with reinforced ribs and 5-lever deadlocks to give you that extra layer of security.

armorgard **trekdorr**™



» WATCH THE TREKDROR™ IN ACTION

ROBUST CORRUGATED 1.5MM STEEL CASING PROVIDES DURABILITY AND STRENGTH

TKD1 AND TKD3 CAN BE STACKED

ACCESS CONTENT EASILY AND SAFELY

TKD1

AVAILABLE IN 3 DIFFERENT SIZES

DRAWER EXTENDS OUT OVER 80% FOR SPACE EFFICIENCY



TKD3

RECESSED HANDLES

UNIQUE ROLLER SYSTEM ENSURES A SMOOTH OPERATION

KEYED ALIKE 5-LEVER DEADLOCKS FOR MAXIMUM SECURITY



For on-site solutions, call our customer experience team.

TOOL AND EQUIPMENT STORAGE

» "BRILLIANT! AMAZING TO SEE HOW MUCH KIT YOU CAN FIT IN THEM"

armorgard trekdror™

TKD1



TKD2

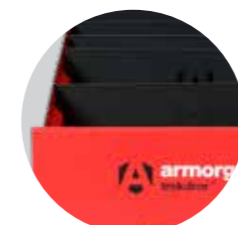
TKD3



» OPTIONAL EXTRAS



MOUNTING KIT ALLOWS THE TREKDROR™ TO BE MOUNTED



DIVIDER KIT ALLOWS YOU TO EASILY ORGANISE YOUR TOOLS



OPTIONAL ANTI-SLIP RUBBER MAT TO PREVENT TOOLS FROM MOVING



STACKING KIT ALLOWS THE TREKDROR™ TO BE STACKED

Product Code	Description	Weight (kg)	External Dimensions W x D x H (mm)	External Dimensions 2 (including drawer open) W x D x H (mm)	Internal Dimensions W x D x H (mm)
TKD1	TrekDror™	44	490 x 1105 x 300	490 x 1900 x 300	405 x 1040 x 245
TKD2	TrekDror™	63	980 x 1105 x 200	980 x 1905 x 200	900 x 1040 x 145
TKD3	TrekDror™	58	490 x 1105 x 490	490 x 1905 x 490	405 x 1040 x 435
TKD1D	TrekDror™ Divider Kit	3	435 x 3 x 240	N/A	N/A
TKD2D	TrekDror™ Divider Kit	3	925 x 3 x 140	N/A	N/A
TKD3D	TrekDror™ Divider Kit	3	435 x 3 x 400	N/A	N/A
TKDMPK	TrekDror™ Mounting Kit	1	N/A	N/A	N/A
TKDSPK	TrekDror™ Stacking kit	1	N/A	N/A	N/A
TKD1RM	TrekDror™ Mat for TKD1	1.5	437 x 1040 x 3	N/A	N/A
TKD2RM	TrekDror™ Mat for TKD2	3	927 x 1040 x 3	N/A	N/A
TKD3RM	TrekDror™ Mat for TKD3	1.5	437 x 1040 x 3	N/A	N/A

Note: Weights and dimensions are approximate. External dimensions include handles.

The ultimate portable tool protection for tradesmen on the move

BarroBox™ is secure, robust, and extremely versatile. This one-of-a-kind, mobile site box protects your tools wherever you need to work.

Easily wheel tools and equipment around on-site, then use a lever from inside the box to raise the wheels and lock to create a static, secure tool vault.

armorgard barrobox™



» WATCH THE BARROBOX™ IN ACTION

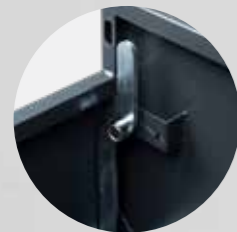


BB2



KEYED ALIKE 5-LEVER DEADLOCKS BOTH SIDES WITH HEAVY-DUTY CHUBB-STYLE KEYS

SLAMSTOP LID STAY FOR ADDITIONAL USER SAFETY



LIFTING HANDLE INSTANTLY CONVERTS BARROBOX™ FROM MOBILE TO STATIC



STRONG GAS STRUTS FITTED AS STANDARD - CONFORMS TO INDUSTRY STANDARDS

ANTI-JEMMY FEATURES FOR INCREASED SECURITY

ROBUST FOLDING HANDLES ENSURE THE BARROBOX™ IS EASY TO MANOEUVRE

HEAVY-DUTY WHEELS TO TAKE IMPACT

ROBUST CONSTRUCTION FROM HEAVY-DUTY STEEL PLATE THROUGHOUT

POWDER COATED FOR MAXIMUM DURABILITY



For on-site solutions, call our customer experience team.

Product Code	Description	Weight (kg)	External Dimensions W x D x H (mm)	Internal Dimensions W x D x H (mm)
BB2	BarroBox™	82	770 x 1045 x 716	600 x 797 x 608

Note: Weights and dimensions are approximate. External dimensions include handles.

TOOL AND EQUIPMENT STORAGE

armorgard

tuffstor cabinet™

The ultra-tough cabinet that keeps your equipment organised and accessible

TuffStor Cabinet™ offers the same level of security as a conventional site safe but uses less floor space. This versatile, secure cabinet keeps tools safe and easily accessible. Ideal for use in workshops and vehicles. Want it mobile? It's easy to add castors using the pre-drilled holes.



TSC3



KEYED ALIKE 5-LEVER DEADLOCKS BOTH SIDES WITH HEAVY-DUTY CHUBB-STYLE KEYS

FULLY ADJUSTABLE SHELVES FITTED ON ALL SIZES

POWDER COATED FOR MAXIMUM DURABILITY

HEAVY-DUTY DOORS WITH FIXED HINGES AND CONCEALED ANTI-JEMMY SYSTEM

ROBUST CONSTRUCTION FOR MAXIMUM PROTECTION

FORK SKIDS WITH FIXING SLOTS FOR EASILY ADDING CASTORS



For on-site solutions, call our customer experience team.



TSC1

TSC2

OPTIONAL EXTRAS



HEAVY-DUTY CASTORS USING THE PRE-DRILLED HOLES



TSC3



980mm



TSC1

1250mm



TSC2

1555mm



TSC3

Product Code	Description	Weight (kg)	External Dimensions W x D x H (mm)	Internal Dimensions W x D x H (mm)
TSC1	TuffStor Cabinet™	44	500 x 530 x 980	490 x 465 x 895
TSC2	TuffStor Cabinet™	74	800 x 585 x 1250	790 x 540 x 1170
TSC3	TuffStor Cabinet™	113	1205 x 580 x 1555	1185 x 510 x 1475

Note: Weights and dimensions are approximate. External dimensions include handles.

TOOL AND EQUIPMENT STORAGE

The secure storage cabinet designed to keep thieves at bay!

The high value of copper fittings and cabling means that theft is on the rise, with criminals targeting construction sites on a daily basis. Don't make it easy for them! **FittingStor™** is designed to secure all your costly M&E components and tools in one safe, easily portable location.



» WATCH THE FITTINGSTOR™ IN ACTION

armorgard fittingstor™

POWDER COATED FOR MAXIMUM DURABILITY

FITTINGS BINS TOUGH LIFT-OUT PLASTIC FITTINGS BINS SUPPLIED (6 X BINS FOR FC2 AND 15 X BINS FOR FC3)



KEYED ALIKE 5-LEVER DEADLOCKS WITH HEAVY-DUTY CHUBB-STYLE KEYS (FC2, FC3, FC4)

ROBUST STEEL PLATE CONSTRUCTION FOR MAXIMUM PROTECTION

STORAGE COMPARTMENT IN THE BASE FOR TOOLS & EQUIPMENT

HEAVY-DUTY INDUSTRIAL CASTORS FITTED AS STANDARD

FORKLIFT SKIDS FOR EASY TRANSPORTATION

» For on-site solutions, call our customer experience team.



TOOL AND EQUIPMENT STORAGE

» "THE MOST APPROPRIATE FITTING STORE ON THE MARKET."

armorgard fittingstor™

FC2 & FC3 - REMOVABLE GALVANISED SHELVES IDEAL FOR LINBINS



FC3



FC2



FC4



FC4 - UNIQUE COMPARTMENTALISED SYSTEM



FC5



HASP AND STAPLE PADLOCK FACILITY (FC5)

FC5 & FC6 - FIXED REINFORCED CERTIFIED SHELVES



FC6



» OPTIONAL EXTRAS



FITTINGS BINS

1450mm



FC2

1750mm



FC3

1575mm



FC4

1575mm



FC5

1880mm



FC6

Product Code	Description	Weight (kg)	External Dimensions W x D x H (mm)	Internal Dimensions W x D x H (mm)
FC2	FittingStor™	89	800 x 555 x 1450	790 x 540 x 1170
FC3	FittingStor™	139	1200 x 550 x 1750	1185 x 510 x 1465
FC4	FittingStor™	133	915 x 990 x 1575	890 x 450 x 300
FC5	FittingStor™	160	960 x 985 x 1375	900 x 900 x 1290
FC6	FittingStor™	123	1077 x 775 x 1880	880 x 709 x 1592

Note: Weights and dimensions are approximate. External dimensions include handles.

The mobile secure storage trunk that keeps your piping safe and organised

This innovatively designed portable 'copper coffin' gives you peace of mind that your piping is safe from theft. The PipeStor™ accommodates different sizes and styles of pipes, including plastic and metal conduit, trunking and cable tray.

Extremely versatile - it can be extended to accommodate longer lengths by adding sections as required.

armorgard pipestor™



FACILITY FOR PADLOCK

INTERNALLY DIVIDED INTO 4 SEPARATE COMPARTMENTS

ROBUST STEEL PLATE CONSTRUCTION FOR MAXIMUM PROTECTION



SECURED WITH A 5-LEVER DEADLOCK AND HEAVY-DUTY CHUBB STYLE KEYS

AVAILABLE FOR EITHER 3M OR 6M LENGTHS



PS3.0

PS6.0

FULLY MOBILE WITH HEAVY-DUTY SWIVEL CASTORS

FORK SKIDS FOR EASY TRANSPORTATION

POWDER COATED FOR MAXIMUM DURABILITY

» For on-site solutions, call our customer experience team.

Product Code	Description	Weight (kg)	External Dimensions W x D x H (mm)	Internal Dimensions W x D x H (mm)
PS3.0	3m PipeStor™	133	575 x 3205 x 785	495 x 3160 x 495
PS6.0	6m PipeStor™	256	575 x 6410 x 785	495 x 6350 x 495

Note: Weights and dimensions are approximate. External dimensions include handles.



TOOL AND EQUIPMENT STORAGE



Our quick-assembly, flat-pack, modular solution for on-site secure storage

Forma-Stor™ is our popular secure store that can be constructed in as little as 10 minutes. With 5-lever deadlocks and jemmy-proof joins, the **Forma-Stor™** is the most robust flat-pack store around. An ideal solution for contractors who need quick and convenient storage, these walk-in units are constructed using galvanised panels that fasten neatly together with very few tools.

armorgard forma-stor™



» **FORMA-STOR™ IS DELIVERED FLAT-PACKED FOR EASY TRANSPORTATION**

— **STACKED FLAT-PACKED PANELS**

— **CAN BE DELIVERED PRE-ERECTED AT AN ADDITIONAL COST**

CRANE LIFTING EYES

AVAILABLE IN 4 STANDARD SIZES

FR200-T



FULLY GALVANISED AND POWDER COATED FOR MAXIMUM DURABILITY

KEYED ALIKE 5 LEVER DEADLOCKS AND JEMMY-PROOF JOINS

FORKLIFT POCKETS FOR EASY TRANSPORTATION

STRONG FITTED OSB FLOOR

ERECTED SIMPLY AND EASILY WITH NO FUSS! INSTRUCTIONS INCLUDED



» **WATCH THE FORMA-STOR™ BEING BUILT IN 6 MINUTES**

» "STRONG, SECURE AND STURDY. I WOULD CERTAINLY RECOMMEND IT"

armorgard forma-stor™

FR100-T



FR400-T



» FORMA-STOR™ ACCESSORIES



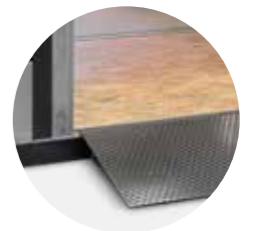
BLOKKABAR



200KG CERTIFIED SHELVES



LED LIGHTING



HEAVY-DUTY RAMP

» For on-site solutions, call our customer experience team.

FR300-T



Individual Panel Weight (kg)	End Panel	Door Panel	Side Panel	Roof Panel	Floor	Total
FR100-T	55.9	75.8	20.7	32.6	57.5	251
FR200-T	55.9	75.8	52.9	52.9	112.3	384
FR300-T	55.9	75.8	69.1	75.8	143	467
FR400-T	55.9	75.8	114	95.2	186	594

Product Code	Description	Weight (kg)	External Dimensions (including protrusions) W x D x H (mm)	Internal Dimensions W x D x H (mm)
FR100-T	Forma-Stor™	251	2075 x 1120 x 2160	1920 x 970 x 1950
FR200-T	Forma-Stor™	384	2075 x 2075 x 2160	1920 x 1920 x 1950
FR300-T	Forma-Stor™	467	2075 x 2990 x 2160	1920 x 2840 x 1950
FR400-T	Forma-Stor™	594	2075 x 3995 x 2160	1920 x 3840 x 1950
FRS2	Forma-Stor™ Shelf	20	1970 x 520 x 30	N/A
FRBL2	BlokkaBar	23	1960 x 170 x 110	N/A
FRR4	Forma-Stor™ Ramp	37	1185 x 750 x 100-195	N/A
FRLK2	230V Forma-Stor™ Lighting Kit	5	N/A	N/A

Note: Weights and dimensions are approximate. External dimensions include handles.

armorgard

strimmersafe vault™

The ultra-tough, secure vault for storing trimmers and other long handled tools

The StrimmerSafe Vault™ is a secure storage range specially designed for trimmers and similar long-handled tools. Suitable for use in vehicles or workshops, this highly secure vault benefits from an ultra-tough, anti-force construction and an innovative heavy-duty locking mechanism – once the lid is shut and locked, the strimmer is impossible to remove.



SSU6



Product Code	Description	Weight (kg)	External Dimensions W x D x H (mm)	Internal Dimensions W x D x H (mm)
SSV12	StrimmerSafe Vault™	69	1275 x 515 x 450	1190 x 445 x 445
SSVX6	StrimmerSafe Vault™	63	1800 x 555 x 445	1710 x 480 x 440
SSV6	StrimmerSafe Vault™	141	1970 x 675 x 665	1880 x 605 x 580

Note: Weights and dimensions are approximate. External dimensions include handles.

armorgard

strimmersafe rack™

The unique upright storage system for securing your trimmers

Strimmers are among the most commonly stolen power tools. The StrimmerSafe Rack™ is packed full of features to keep your equipment secure and organised whilst maximising on storage space.



SSR

Product Code	Description	Weight (kg)	External Dimensions W x D x H (mm)	Internal Dimensions W x D x H (mm)
SSR	StrimmerSafe Rack™	93	2055 x 365 x 2085	N/A

Note: Weights and dimensions are approximate. External dimensions include handles.

TOOL AND EQUIPMENT STORAGE



SECTION 02 WORK PLATFORMS AND UNITS



SECTION 02

Work platforms and units

instagate™	40
instructahut™	42
tuffbench™	43
mobile tuffbench™	44
cuttingstation™	46
sitestation™	50

An expandable barrier for crowd/traffic control in any location

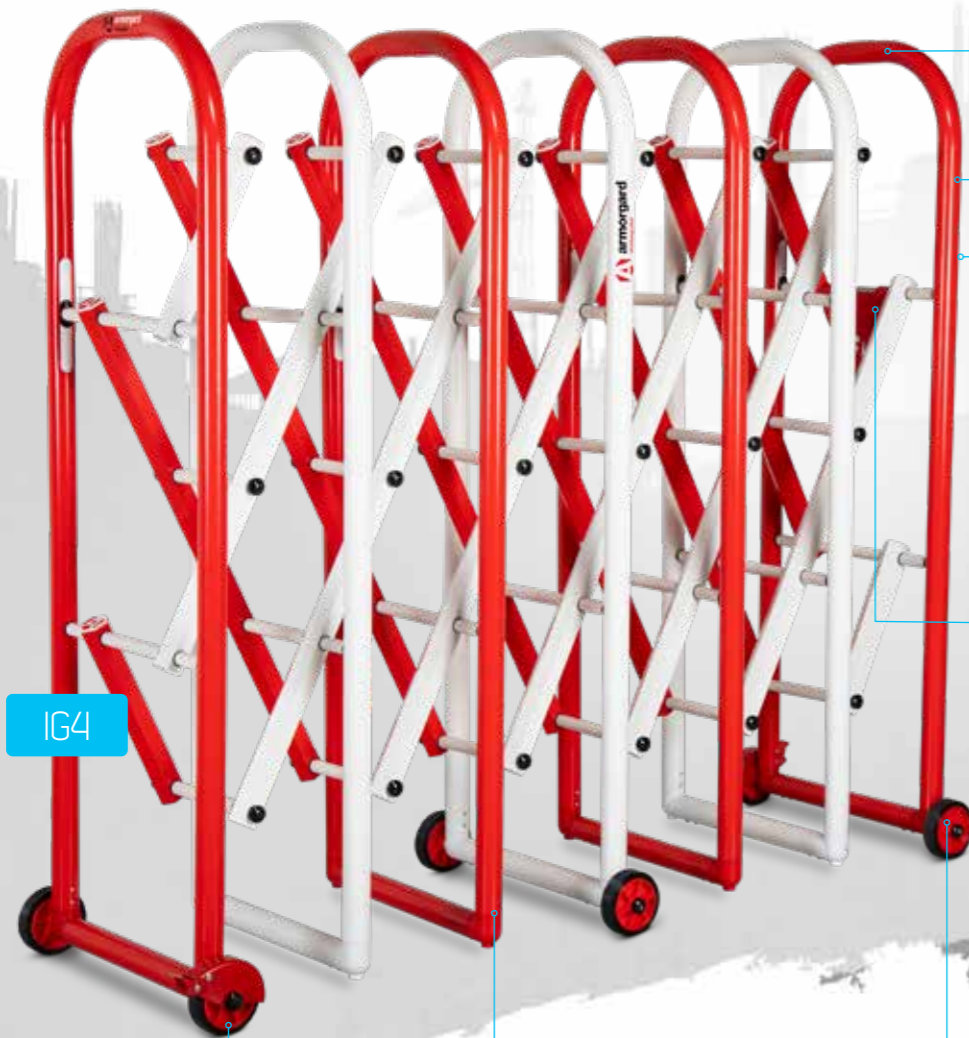
InstaGate™ is a quick-to-deploy barrier that's robust and easy to extend to full length. Constructed from strong lightweight aluminium, this durable barrier can be wheeled into position, expanded and braked single-handedly. InstaGate™ forms a highly visible red and white barrier for enhanced safety in any situation, indoors or out.

InstaGate™ is available in two heights (4ft and 6ft).



» WATCH THE INSTAGATE™ IN ACTION

armorgard instagate™



IG4

ANTI-TRAPPING FINGER SAFE SYSTEM TO IMPROVE USER SAFETY

POWDER COATED AND WEATHERPROOF

DESIGNED FOR HIGH VISIBILITY



SIMPLE TO USE CATCH, TO LOCK IN POSITION AND ATTACH MULTIPLE BARRIERS TOGETHER FOR WIDER OPENINGS

BRAKES TO SECURE IN PLACE

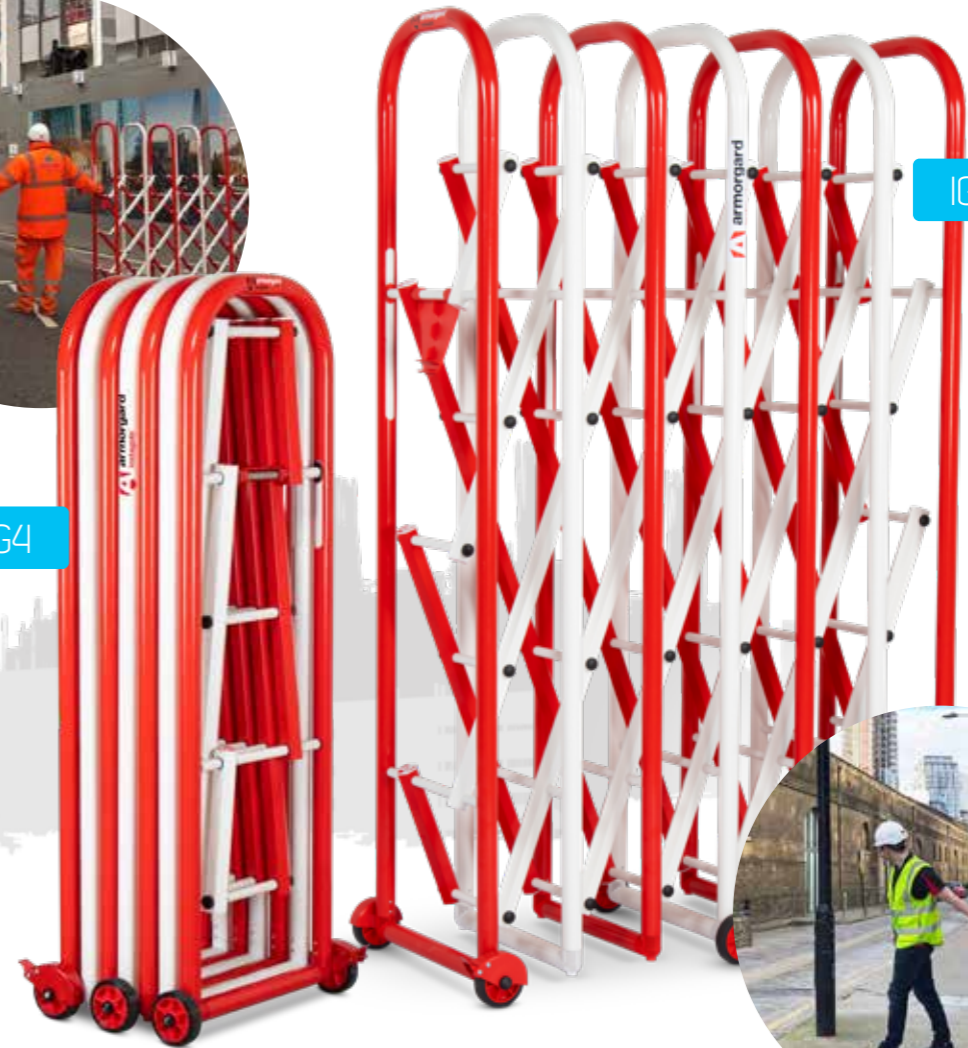
LIGHTWEIGHT, YET STRONG AND RIGID

WHEELS ALLOW FOR SIMPLE PORTABILITY



IG4

IG6



» INSTAGATE™ ACCESSORIES



LINKING KIT - SECURELY LINK TOGETHER MULTIPLE INSTAGATE™



ANCHOR KIT - SAFELY FIX YOUR INSTAGATE™ TO A FLAT SURFACE



Product Code	Description	Weight (kg)	Folded Dimensions W x D x H (mm)	Extended Dimensions W x D x H (mm)
IG4	InstaGate™	30	440 x 540 x 1380	2185 x 540 x 1380
IG6	InstaGate™	40	450 x 542 x 1884	2380 x 542 x 1884

Note: Weights and dimensions are approximate. External dimensions include handles.

The all-in-one notice board and emergency station

InstructaHut™ has many talents... It's a meeting point, an emergency station for your first-aid, fire and H&S items, a notice board for your regulatory documentation and more. This all-in-one solution provides a home for the lot and is therefore an essential part of your on-site inventory.

armorgard instructahut™



IH4



RED PAINT FOR HIGH VISIBILITY ONSITE

CENTRAL SITE MEETING POINT, WHICH IS CLEARLY VISIBLE

REPLACEABLE BACKBOARD ENSURES THIS CAN BE RE-USED MANY TIMES OVER



NOTICE BOARD MEETING POINT AND EMERGENCY STATION FOR FIRST-AID, H&S AND FIRE EQUIPMENT

DOUBLE-SIDED FOR MAXIMUM USABILITY

WEATHERPROOF DESIGN SHEDS WATER TO ENSURE DOCUMENTS INSIDE ARE PROTECTED TOO

SELF-SUPPORTING AND BUILT TO LAST

OPTIONAL EXTRA SECURITY CABINET

FORKLIFT SKIDS FOR EASE OF TRANSPORTATION

EXCELLENT FOR DISPLAYING DOCUMENTATION SUCH AS KEY H&S AND INSURANCE POLICIES

IHC4

Product Code	Description	Weight (kg)	External Dimensions W x D x H (mm)	Internal Dimensions W x D x H (mm)
IH4	InstructaHut™	71	1235 x 500 x 1850	N/A
IHC4	InstructaHut™ Cabinet	28	950 x 445 x 605	940 x 425 x 600

Note: Weights and dimensions approximate. External dimensions include handles.

The versatile and easy-to-use mobile work platform from Armorgard

The TuffBench™ heavy-duty folding work platform is a versatile workbench designed for contractors on the move and for use on construction sites. Its quick and easy assembly system – with no detachable parts – makes it easy to transport and store. When it's time to move on, simply collapse the platform, fold the legs and you're ready to go! Durable and built to last, the surface is manufactured from sustainable pressed timber.

armorgard tuffbench™



BH1080-VWK

HEAVY-DUTY 300KG LOAD CAPACITY

DURABLE TIMBER WORK SURFACE

FOLDING LEGS SECURED WITH A CHAIN WHEN SHUT

METAL EDGE FLUSH WITH WOODEN WORK SURFACE

POWDER-COATED FRAME FOR LONG-LASTING DEPENDABILITY

NO DETACHABLE PARTS - STAYS TOGETHER AS ONE UNIT

IDEAL FOR FITTING A CHAIN VICE AND ENGINEER'S VICE TO

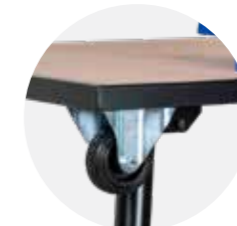
OPTIONAL EXTRAS



6" ENGINEER'S VICE



4" CHAIN VICE



HANDLE AND WHEELS

Product Code	Description	Weight (kg)	External Dimensions W x D x H (mm)	Folded Down Dimensions W x D x H (mm)
BH1080	TuffBench™	28	1080 x 750 x 820	1080 x 750 x 130
BH1080-HW	TuffBench™ with Handle and Wheel Kit	31	1080 x 750 x 820	1080 x 750 x 130
BH1080-VWK	TuffBench™ + c/w Wheels, Handle, Chain Vice and Engineer's Vice	58	1165 x 870 x 1005	1165 x 870 x 315
EV6	6" Engineer's Vice	22	N/A	N/A
CV4	4" Chain Vice	5	N/A	N/A
BH1080-H	Handle and Wheel Kit for TuffBench™	3	N/A	N/A

Note: Weights and dimensions approximate. External dimensions include handles.

armorgard

mobile tuffbench™

The universal mobile workbench that's also a heavy-duty cabinet!

Use the Armorgard Mobile TuffBench™ for a day and you'll wonder how you ever got by without it. A combination of heavy-duty storage cabinet and multi-purpose work surface, this innovative workbench makes any job that bit easier, while ensuring that your tools and equipment remain safe from thieves and damage. Its ultra-tough surface is ideal for fixing a chain vice, engineer's vice and other equipment, making it indispensable for M&E contractors when pipe threading and bending.



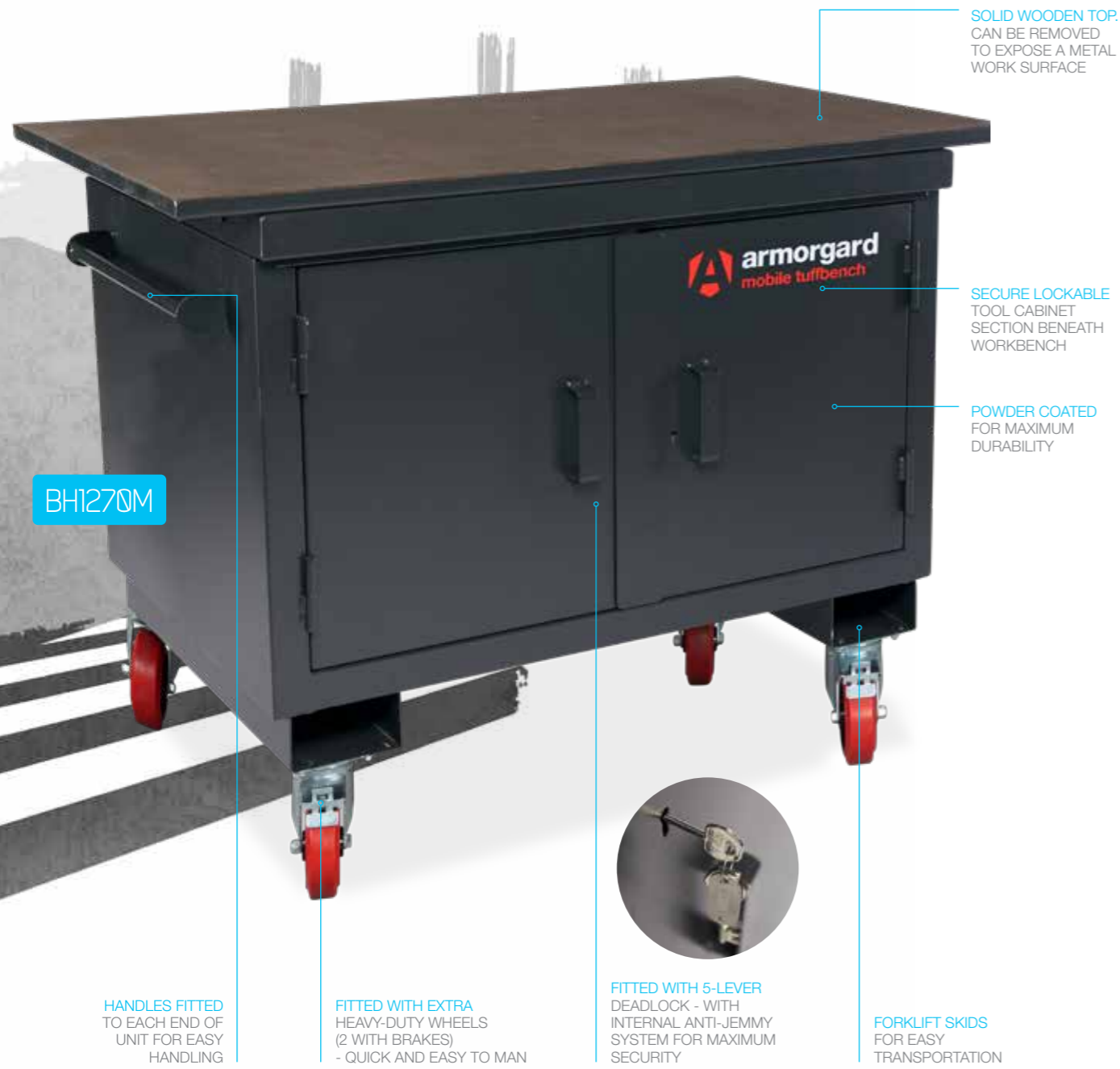
OPTIONAL EXTRAS



6" ENGINEER'S VICE



4" CHAIN VICE



Product Code	Description	Weight (kg)	External Dimensions W x D x H (mm)	Internal Dimensions W x D x H (mm)
BH1270M	Mobile TuffBench™	96	1200 x 700 x 950	1000 x 630 x 615
BH1270-UF	Mobile TuffBench™ with Vices Fitted	125	1200 x 705 x 940	990 x 630 x 640

Note: Weights and dimensions are approximate. External dimensions include handles.

A go-anywhere, multi-purpose cutting station with unrivalled safety features to minimise vibration, sparks, noise and dust

Our ever-popular Armorgard CuttingStation™ is a neat, mobile workstation that eliminates the need for a separate cutting room and is essential for safely cutting lengths of material, such as conduit, timber, cable tray and pipe. The SS7 model includes lighting and chamfered corners to further reduce noise. You'll also find a new expandable working area to accommodate mitre saws and cutaway sides for handling longer materials.

armorgard cuttingstation™

SWarf COLLECTOR WITH DUST EXTRACTOR CONNECTION

ADAPTABLE PVC CURTAINS TO CONTAIN SPARKS

RUBBER MAT TO REDUCE VIBRATION

SS7

RUBBERISED WHEELS FOR REDUCED VIBRATION

SECURE CABINET TO KEEP YOUR TOOLS SAFE

EXTENDABLE SUPPORT ARMS WITH 4 CONFIGURATIONS

KEYED ALIKE 5-LEVER DEADLOCK WITH CHUBB-STYLE KEYS

European Patent Application Number: EP17183824.6

European Community Design Registration Number: 004511525



armorgard cuttingstation™

OPTIONAL EXTRAS



SS7C

SS7C UNIVERSAL CLAMP HOLDS ELECTRIC SAWS IN PLACE TO IMPROVE HEALTH AND SAFETY. COMPATIBLE WITH SS7 AND SS7X



LIFTING EYES TO ALLOW FOR TRANSIT BY CRANE



EXTRACTION SYSTEM HELPS TO CONTAIN DUST AND REDUCES EXPOSURE TO HARMFUL SUBSTANCES

SS7X



FORK SKIDS FOR EASY TRANSPORTATION

WORKS PERFECTLY WITH THE HUSQVARNA AIR SCRUBBER

HEAVY-DUTY ALL-SWIVEL WHEELS FOR GOOD MOBILITY



EASY ACCESS WITH CUT-OUT FRONT



PROVISION FOR ATTACHING A VACUUM HOSE



EXTENDABLE BACK PANEL FOR EXTRA WORKSPACE TO CATER FOR MITRE SAWS

NARROW ENOUGH TO FIT THROUGH STANDARD DOORWAYS

THE 4 CONFIGURATIONS OF THE EXTENDABLE SUPPORT ARMS



FLAT SURFACE IDEAL FOR LONG LENGTHS



ROLLER SURFACE IDEAL FOR LONG LENGTHS



V-SHAPE IDEAL FOR ROUND PIPES



FLAT EDGE IDEAL FOR LONG LENGTHS

Product Code	Description	Weight (kg)	External Dimensions W x D x H (mm)	Internal Dimensions W x D x H (mm)
SS7	CuttingStation™	175	Standard: 1390 x 780 x 1900 Extended: 3225 x 1090 x 1900	Top (with extended back): 1125 x 955 x 1000 Bottom: 1125 x 710 x 550
SS7X	CuttingStation™ with Extraction System	200	Standard: 1390 x 780 x 1900 Extended: 3225 x 1090 x 1900	Top (with extended back): 1125 x 955 x 1000 Bottom: 1125 x 710 x 550
SS7C	CuttingStation™ Clamp	4	1000 x 550 x 30	N/A

Note: Weights and dimensions are approximate. External dimensions include handles.

For on-site solutions, call our customer experience team.

armorgard sitestation™

A purpose-built solution for your on-site work station needs

The innovatively designed Armorgard SiteStation™ gives you a convenient place for routine on-site tasks, while also providing secure storage for your valuable equipment. The top section features a folding slanted work surface – ideal for displaying plans and charts – that provides additional lockable storage when shut – ideal for power tools, PPE and fixings.



» For on-site solutions, call our customer experience team.

» MOBILE ON-SITE OFFICE



» WATCH THE SITESTATION™ IN ACTION

Product Code	Description	Weight (kg)	External Dimensions W x D x H (mm)	Internal Dimensions W x D x H (mm)
SS2	SiteStation™	223	1400 x 845 x 1970	Top: 1300 x 800 x 1065 Bottom: 1300 x 800 x 610

Note: Weights and dimensions are approximate. External dimensions include handles.



SECTION 03 WELFARE PRODUCTS

SECTION 03 Welfare range

scrubkart™	54
sanistation™	56
sanistation mini™	58

The mobile, instant warm water hand washing unit, purpose built for sites

Patent pending
Application number - 2006552.0

Take sanitising to the next level with **ScrubKart™**, our mobile hot or cold hand washing unit. With instant warm water by your side, a heavy-duty steel construction and robust solid rubber puncture-proof tyres to take on rougher terrains, it is a solution that is built to last.

armorgard scrubkart™

UP TO 120 HAND WASHES PER TANK

BUILT-IN PAPER TOWEL DISPENSER

SOAP DISPENSER

SBK3T

Kick here to open

SOLID RUBBER TYRES EASILY MANOEUVRED BY ONE INDIVIDUAL

FOOT PUMP OPERATED TAP

WATER HEATER AVAILABLE UPON REQUEST

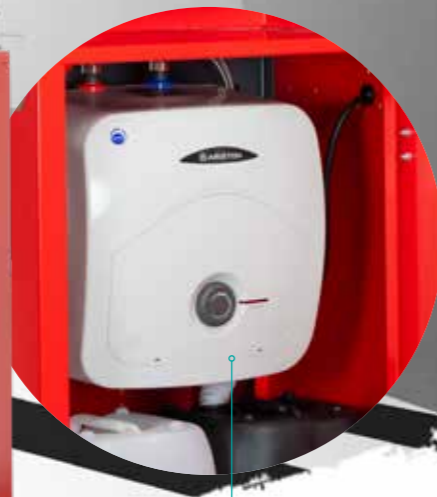


» WATCH THE SCRUBKART™ IN ACTION

STAINLESS STEEL SINK AND TAP

HANDS-FREE FOOT-OPERATED BIN

MAINS FED OPTION AVAILABLE ON REQUEST



Product Code	Description	Weight (kg)	External Dimensions W x D x H (mm)	Internal Dimensions W x D x H (mm)
SBK3T	ScrubKart™ Tank Fed Cold Water	95	790 x 870 x 1450	N/A

Note: Weights and dimensions are approximate. External dimensions include handles.



Unique solution for the immediate deployment of a central sanitising and noticeboard station

Heavy-duty castors make the SaniStation™ a completely mobile unit that can provide relevant welfare where it's needed most. With its double-sided board, it is completely customisable for sanitising products, first aid, fire safety, and health and safety. The ultimate purpose-built on-site solution.

armorgard sanistation™



» WATCH THE SANISTATION™ S40 IN ACTION



RELEVANT SANITISING SIGNAGE INCLUDED AS STANDARD

CAN BE USED AS A FIRST AID, FIRE SAFETY OR SANITISER STATION

BOTH SIDES CAN BE UTILISED

OPTIONAL EXTRA SECURE LOCKABLE CABINET FOR SPARES

» OPTIONAL EXTRAS



ALCOHOL AND ALCOHOL-FREE HAND SANITISER GEL AND WIPES



MANUAL AND AUTOMATIC DISPENSERS



SECURE LOCKABLE CABINET



HEAVY-DUTY CASTORS FOR EASY RELOCATION

Product Code	Description	Weight (kg)	External Dimensions W x D x H (mm)	Internal Dimensions W x D x H (mm)
S40	SaniStation™	72	1235 x 500 x 1850	N/A
S40C	SaniStation™ Cabinet	28	950 x 445 x 605	940 x 425 x 600

Note: Weights and dimensions are approximate. External dimensions include handles.



BOTH SIDES CAN BE UTILISED

S20

RELEVANT SANITISING SIGNAGE INCLUDED AS STANDARD



EASILY RELOCATABLE WITH TWO WHEELS

» OPTIONAL EXTRAS



ALCOHOL AND ALCOHOL-FREE HAND SANITISER GEL AND WIPES



MANUAL AND AUTOMATIC DISPENSERS

Product Code	Description	Weight (kg)	External Dimensions W x D x H (mm)	Internal Dimensions W x D x H (mm)
S20	SaniStation™	26.5	700 x 600 x 1725	N/A

Note: Weights and dimensions are approximate. External dimensions include handles.



» WATCH THE SANISTATION™ S20 IN ACTION

Robust hand sanitiser stations for internal high-traffic environments

There's a **SaniStation Mini™** for every need, whether you're looking for a hands-free unit, a simple stand or a wall-mounted option.

With an anti-theft system fitted as standard and a low dosage pump to reduce spillage, you can rest assured that the **SaniStation Mini™** will deliver every time when it comes to protecting welfare.

armorgard

sanistation mini™



OPTIONAL EXTRAS



ALCOHOL AND ALCOHOL-FREE HAND SANITISER



SANITISER WIPES AVAILABLE IN PACKS OF 60 OR TUB OF 500

For on-site solutions, call our customer experience team on.

Product Code	Description	Weight (kg)	External Dimensions W x D x H (mm)	Internal Dimensions W x D x H (mm)
S10HF	SaniStation Mini™ Hands Free	15	155 x 275 x 1015 (Base Plate: 400 x 325)	N/A
S10S	SaniStation Mini™ Standard	12	200 x 1000 (Base Plate: 400)	N/A
S10WM	SaniStation Mini™ Wall Mounted	2	200 x 240	N/A
BWM500	Wall-Mounted Bucket Holder	1	248 x 243 x 114	Ø205

Note: Weights and dimensions are approximate. External dimensions include handles.



SECTION 04 MANUAL HANDLING PRODUCTS

SECTION 04 Manual handling products

piperrack™	63
bundlerack™	66
loadall™	67
rubble truck™	72
flexikart™	74
v-kart™	76
beamkart™	76
turntable truck™	77



The adaptable mobile on-site pipe and conduit storage solution

The Armorgard PipeRack™ is an innovatively designed wheeled storage rack that keeps your pipes organised and easy to manoeuvre whilst working on-site. Each unit has been tested and certified to guarantee a top-quality product that is durable and built to last. The fully collapsible design means that it can be easily transported and stored when not in use. PipeRack™ is available with either a 1-tonne or 2-tonne capacity.

armorgard
piperack™



PR2



STACKABLE UP TO 6 UNITS HIGH

ALL STEEL HEAVY-DUTY CONSTRUCTION

POWDER-COATED FINISH FOR ULTIMATE PROTECTION

UNIQUE FULLY FOLDING DESIGN

FITTED WITH ULTRA-ROBUST INDUSTRIAL SWIVEL CASTORS

MANUAL HANDLING PRODUCTS

» For on-site solutions, call our customer experience team.

» INNOVATIVE AND UNIQUE
FULLY FOLDING DESIGN

armorgard piperack™

PR1



PR2



» OPTIONAL EXTRAS



STRONG ATTACHABLE
SAFETY HANDLE



LINKING KIT TO JOIN
THE TWO PIPERACK™
TOGETHER (PRLK)



UPGRADE KIT FROM
1 TONNE TO 2 TONNE
CAPACITY (PRUK)



CASTOR DIRECTION
LOCK ADAPTORS
(LDF)

Product Code	Description	Weight (kg)	External Dimensions W x D x H (mm)	Folded Down Dimensions W x D x H (mm)	Weight Loading
PR1	PipeRack™	83	1010 x 1565 x 1570	1010 x 1565 x 550	1 Tonne
PR2	PipeRack™	101	1010 x 1565 x 1570	1010 x 1565 x 550	2 Tonne
PRSH	PipeRack™ Handle	0.6	94 x 165 x 90	N/A	N/A
PRLK	PipeRack™ Linking Kit	15	N/A	N/A	N/A
PRUK	PipeRack™ Upgrade Kit	20	N/A	N/A	N/A

Note: Weights and dimensions are approximate. External dimensions include handles.

The mobile rack for easy transport and storage of large bundles of materials

The Armorgard **BundleRack™** is a simple and effective means of transporting and storing large bundles of materials. It allows you to organise your materials on-site to optimise space, while ensuring they are quick and easy to move when needed. Designed to a high-quality, heavy-duty specification with a powder-coated finish, **BundleRack™** is built to last. The unit can be folded and stacked for easy storage when not in use.

armorgard bundlerack™



STACKABLE UP TO 6 UNITS HIGH

ROBUST CONSTRUCTION AND WEIGHT LOAD TESTED TO CARRY UP TO 1 TONNE

INTEGRAL MESH BASE FOR CARRYING SMALLER ITEMS

POWDER COATED FOR MAXIMUM DURABILITY

FOLDABLE AND STACKABLE FOR EASY STORAGE

SIDE LOADING PROVISION FOR LOADING AND UNLOADING MATERIALS USING A FORKLIFT

HEAVY-DUTY SWIVEL WHEELS - TWO WITH BRAKES

BR1

Product Code	Description	Weight (kg)	External Dimensions W x D x H (mm)	Folded Down Dimensions W x D x H (mm)	Weight Loading
BR1	BundleRack™	79	1005 x 1560 x 1010	1005 x 1560 x 550	1 Tonne

Note: Weights and dimensions are approximate. External dimensions include handles.

The unique space-saving trolley for transporting large sheets of board

Save space, make handling easier and protect your materials from damage using **LoadAll™ LA750**. Whether in the yard or on-site, transporting large sheets of board has never been easier. Specially designed for storing and transporting plasterboard and other large sheet materials.

armorgard loadall™ LA750



ROBUST CONSTRUCTION USING 3MM STEEL

SIDE LOADING FACILITY WITH EASY-GRAB HANDLES



LA750

H-FRAME DESIGN FOR EASE OF TRANSPORTATION THROUGH DOORWAYS AND NARROW SPACES

HEAVY-DUTY CASTORS SUPPLIED AS STANDARD - ALL SWIVEL WHEELS (TWO BRAKED)

EASILY COLLAPSED WITH STORAGE PROVISIONS FOR THE UPRIGHT SUPPORTS



The unique space-saving trolley for transporting large sheets of board

Save space, ease manual handling and protect your materials with the LoadAll™ LA750-PRO. The combination of the H-frame design and innovative clamping system with the swivel wheels and telescopic handle make the LA750-Pro easy to manoeuvre when carrying a full load of sheet materials through doorways and around corners.

armorgard

loadall™ LA750-PRO



LA750-PRO



SECURE THE LOAD WITH UNIQUE CLAMP SYSTEM

UNIQUE H-FRAME DESIGN MAKES ACCESS THROUGH DOORWAYS EASIER

EXTENDING HANDLE TO ACCOMMODATE DIFFERENT BOARD SIZES

SIDE LOADING FACILITY WITH EASY-GRAB HANDLES

ROBUST CONSTRUCTION USING 3 & 5MM STEEL

CAN BE EASILY COLLAPSED WITH NO DETACHABLE PARTS

HEAVY-DUTY CASTORS ALL SWIVEL AND 2 BRAKED FOR MAXIMUM CONTROL OF UNIT

ROBUST POWDER COAT



» WATCH THE LOADALL™ LA750-PRO IN ACTION

MANUAL HANDLING PRODUCTS

The unique space-saving trolley for transporting large sheets of board

LoadAll™ LA1000 is the only trolley of its kind on the market that can be folded and stacked when not in use. It also has no detachable parts! Its A-frame design allows it to be loaded on both sides, maximising its space-saving efficiencies.

armorgard
loadall™
LA1000



LA1000

CENTRE A-FRAME DESIGN MEANS THAT WHEN LOADED, ALL WEIGHT IS LEANING INTO THE CENTRE

CARRIES UP TO 24 SHEETS OF PLASTERBOARD - APPROXIMATELY 60% MORE THAN ALTERNATIVE PRODUCTS

PROVISION FOR STRAPPING BOARDS IN PLACE - IMPROVING SAFETY WHEN ON-SITE

COMPLETE WITH SAFE WORKING LOAD PLATES, CERTIFYING A CAPACITY OF UP TO 1 TONNE

HEAVY-DUTY CASTORS FOR EASY MOBILITY



ONE-PIECE DESIGN KEEPS UNIT TOGETHER AND PREVENTS LOSS OF PARTS



FOLDING & STACKABLE UNIT - TIDY AND EASY TO STORE WHEN NOT IN USE

A unique space-saving trolley for transporting large sheets of material

Ease manual handling, save space and protect your materials from damage with the LA1500. Specially designed for storing and transporting large sheet materials. The wooden slats make it a great option for moving large sheets of glass too.

armorgard
loadall™
LA1500



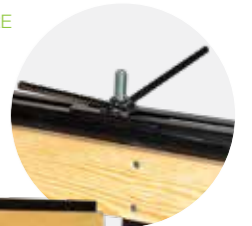
LA1500

STURDY CONSTRUCTION OUT OF 50X50MM AND 50X25MM BOX SECTION



200MM DIAMETER WHEELS - ALL SWIVEL, 2 COMPLETE WITH BRAKES

FIXING POINTS TO SECURE THE MATERIALS TO THE TROLLEY



Product Code	Description	Weight (kg)	External Dimensions W x D x H (mm)	Folded Down Dimensions W x D x H (mm)	Weight Loading
LA750	750kg LoadAll™	41	550 x 1350 x 1130	550 x 1350 x 300	750kg
LA1000	1 tonne LoadAll™	49	730 x 1250 x 1410	730 x 1250 x 495	1 Tonne
LA1500	1.5 tonne LoadAll™	125	900 x 2020 x 1550	N/A	1.5 Tonne
LA750-PRO	750kg LoadAll™ with Clamp	70	1705 x 550 x 1305 Extended: 2305 x 550 x 1805	N/A	750kg

Note: Weights and dimensions are approximate. External dimensions include handles.

armorgard rubble truck™

Our multi-purpose Rubble Truck™ features an in-built tipping feature, ideal for handling waste and rubble

Ergonomically designed for maximum performance and efficiency, the Rubble Truck™ has an array of unique features to create an indispensable on-site companion. Our multi-purpose Rubble Truck™ features a huge 400-litre capacity scoop, extra strength crane lifting eyes, and solid rubber wheels. When the day's over, the unique stackable design means you can maintain a working space that's safe and clutter free.



CRANE LIFTING EYES - WELDED FOR EXTRA STRENGTH



RUBBER BUFFERS FOR SIDE PROTECTION

OVER 400L CAPACITY SCOOP

EASY UNLOADING



RT400

armorgard
rubble truck™

BUILT-IN TIPPING FEATURE

SOLID RUBBER PUNCTURE PROOF WHEELS

ROBUST CONSTRUCTION ENGINEERED FOR HEAVY USE

IDEAL FOR HANDLING MATERIALS, WASTE OR RUBBLE



For on-site solutions, call our customer experience team.



UNIQUE STACKABLE DESIGN



» OPTIONAL EXTRA



RTHL

HEAPED LID TO PREVENT ITEMS INSIDE FALLING OUT. INCREASES LOAD CAPACITY BY UP TO 160L



Product Code	Description	Weight (kg)	External Dimensions W x D x H (mm)	Internal Dimensions W x D x H (mm)	Weight Loading
RT400	Rubble Truck™	88.5	760 x 1460 x 855	675 x 1330 x 650	750kg
RTHL	Rubble Truck™ Lid	19	770 x 1405 x 260	580 x 1400 x 210	N/A

Note: Weights and dimensions are approximate. External dimensions include handles.

A multi-purpose, space-saving, stackable, sturdy and ergonomically friendly unit

Mobilise your materials with the **FlexiKart™**, a safe, multi-purpose folding pallet skate. With a 750kg load capacity, this super-neat and sturdy trolley is ideal for storing materials off the ground and moving them around on-site, even through narrow corridors and doorways.

armorgard flexikart™

ABLE TO HOLD 1200 X 1000 PALLETS WHEN ALL 4 SUPPORT ARMS ARE LOCKED UPRIGHT

ALL 4 SUPPORT ARMS CAN BE RAISED INDIVIDUALLY AS REQUIRED. WHEN NOT IN USE, THEY FOLD BELOW THE BED HEIGHT

WITH THE SUPPORT ARMS FOLDED DOWN, THE FLEXIKART™ CAN ACCOMMODATE LARGER LOADS, OR CAN BE TWINNED WITH A SECOND FLEXIKART™ FOR LONG LOADS SUCH AS METAL BEAMS, WOOD, PIPE, CONDUIT AND OTHER MATERIALS

FK2



A ROBUST PALLET SKATE WHICH INCREASES SAFETY AND REDUCES PHYSICAL STRAIN WHEN MANOEUVRING LOADS MANUALLY

BUILT-IN LASHING POINTS ALLOW LOADS TO BE SECURED, WHICH SAFELY PREVENTS THEM FALLING OFF WHEN MANOEUVRING

FOUR SWIVEL CASTORS (TWO BRAKED) FOR EASY MANOEUVRABILITY

STACKABLE FOR MAXIMUM SPACE EFFICIENCY



For on-site solutions, call our customer experience team.

Product Code	Description	Weight (kg)	External Dimensions (Unfolded) W x D x H (mm)	Folded Down Dimensions W x D x H (mm)	Weight Loading
FK2	FlexiKart™	62	1270 x 755 x 1010	1270 x 755 x 395	750kg

Note: Weights and dimensions are approximate. External dimensions include handles.



MANUAL HANDLING PRODUCTS

armorgard v-kart™

A heavy-duty cart used for handling long lengths of material

Designed to make life easier for those manoeuvring pipe, steel sections and other round lengths of material on construction sites.



POWDER COAT WITH ANTI-CORROSIVE UNDERCOAT

SOLID RUBBER WHEELS

STURDY HANDLE HELPS TO REDUCE BACK STRAIN DURING USE



VK2

Product Code	Description	Weight (kg)	External Dimensions W x D x H (mm)	Internal Dimensions W x D x H (mm)
VK2	V-Kart™	35	1220 x 840 x 900	Up to Ø400mm

Note: Weights and dimensions are approximate. External dimensions include handles.

Designed to be a heavy-duty kart, ideal for handling long lengths of material

The BeamKart™ is designed for the effortless transportation of beams and steels. Robust enough for life on-site, yet nimble enough to quickly become an essential for the everyday movement of heavy and bulky items. The BeamKart™ boasts puncture-proof solid rubber tyres, is available in two sizes, and is finished to the standards you've come to expect from Armorgard.

armorgard beamkart™



BK1

ROBUST CONSTRUCTION USING 3MM STEEL

POWDER-COATED FINISH FOR MAXIMUM DURABILITY

BK2 HAS NO UPRIGHT SIDES. ENABLES HANDLING OF WIDER MATERIALS

BK2

PUNCTURE-PROOF TYRES FOR EASY AND SAFE MANOEUVRING ON-SITE

Product Code	Description	Weight (kg)	External Dimensions W x D x H (mm)	Internal Dimensions W x D x H (mm)	Weight Loading
BK1	BeamKart™	19.8	560 x 510 x 250	345 Between Lugs	500kg
BK2	BeamKart™	27	400 x 510 x 275	N/A	500kg

Note: Weights and dimensions are approximate. External dimensions include handles.

armorgard turntable truck™

For transporting bulk quantities of material and equipment

Our Turntable Truck™ has been engineered to take the full strain of transporting bulk quantities of material and equipment when you really need it, reducing the physical impact for workers on construction sites.

POWDER-COATED FINISH FOR MAXIMUM DURABILITY

RAISED HEAVY-DUTY DECK FOR GOOD GROUND CLEARANCE AND EASY LOADING

SOFT GRIP HANDLES



TT1000



PRECISION STEERING MECHANISM FOR EASY MANOEUVRING

LARGE PUNCTURE-PROOF SOLID RUBBER WHEELS

ENQUIRE ABOUT THE DEADMAN BRAKE SYSTEM

Product Code	Description	Weight (kg)	External Handle Down Dimensions W x D x H (mm)	External Handle Folded Back Dimensions W x D x H (mm)	Weight Loading
TT1000	Turntable Truck™	93	690 x 2540 x 460	690 x 1560 x 770	1000kg

Note: Weights and dimensions are approximate. External dimensions include handles.



SECTION 05 HAZARDOUS GOODS STORAGE



SECTION 05 Hazardous goods storage

tuffcage™	80
gorilla gas cage™	81

The one-piece folding security cage for storing your gas cylinders and costly equipment

The ingeniously designed TuffCage™ is the answer to a wide range of on-site security needs. Constructed from galvanised heavy-duty steel, this robust high-security cage is suitable for storing gas cylinders as well as tools and equipment.

armorgard tuffcage™



SUITABLE FOR SECURING TOOLS AND EQUIPMENT AS WELL AS GAS CYLINDERS

RELEVANT HAZARDOUS WARNING SIGNAGE

QUICK AND EASY TO ERECT AND DISMANTLE

EASILY STACKED WHEN FOLDED DOWN, SAVING ON SPACE

FORKLIFT SKIDS FOR EASY TRANSPORTATION

TC1.2



ONE-PIECE CONSTRUCTION WITH NO REMOVABLE PARTS



2 SECURE PADLOCK POINTS



GALVANISED FOR MAXIMUM DURABILITY IN ALL WEATHER



FOLDS DOWN TO A HEIGHT OF JUST 180MM AND CAN BE STACKED UP



Product Code	Description	Weight (kg)	External Dimensions W x D x H (mm)	Internal Dimensions W x D x H (mm)	No. Standard Size Gas Bottles
TC1.2	TuffCage™	133	1300 x 1240 x 1800	1220 x 1090 x 1760	47/19

Note: Weights and dimensions are approximate. External dimensions include handles.

The unique galvanised security cage specially designed for storing gas cylinders

Robustly constructed using 25mm box sections and 3mm wire mesh, the Gorilla Gas Cage™ features a unique modular bolt-together design using individual galvanised panels, making it quick and easy to erect and dismantle. Suitable for use on site or in the storage yard, it comes complete and ready to erect with all fixings and flat packs when not in use.

armorgard gorilla gas cage™



GGC3

GGC6



Product Code	Description	Weight (kg)	External Dimensions W x D x H (mm)	Internal Dimensions W x D x H (mm)
GGC1	Gas Bottle Cage	40	1012 x 563 x 931	950 x 500 x 900
GGC3	Gas Bottle Cage	60	912 x 566 x 1831	850 x 500 x 1800
GGC4	Gas Bottle Cage	68	1212 x 1266 x 1231	1150 x 1200 x 1200
GGC5	Gas Bottle Cage	67	912 x 966 x 1831	850 x 900 x 1800
GGC6	Gas Bottle Cage	87	1212 x 1266 x 1831	1150 x 1200 x 1800
GGC7	Gas Bottle Cage	98	1812 x 966 x 1831	1750 x 900 x 1800
GGC8	Gas Bottle Cage	108	1812 x 1266 x 1831	1750 x 1200 x 1800
GGC9	Gas Bottle Cage	135	1812 x 1866 x 1831	1750 x 1800 x 1800
GGC10	Gas Bottle Cage	165	2412 x 1866 x 1831	2350 x 1800 x 1800
GGC11	Gas Bottle Cage	188	2712 x 1866 x 1831	2650 x 1800 x 1800
GGC12	Gas Bottle Cage	182	2412 x 2466 x 1831	2350 x 2400 x 1800
GGC13	Gas Bottle Cage	226	2412 x 3666 x 1831	2350 x 3600 x 1800
GGC14	Gas Bottle Cage	270	2412 x 4866 x 1831	2350 x 4800 x 1800
GGC15	Gas Bottle Cage	314	2412 x 6066 x 1831	2350 x 6000 x 1800
GGC16	Gas Bottle Cage	279	3612 x 3666 x 1831	3555 x 3600 x 1800
GGC17	Gas Bottle Cage	205	3662 x 1810 x 1831	3600 x 1750 x 1800

Note: Weights and dimensions are approximate. External dimensions include handles.



SECTION 06

Replacement keys and parts



Lost keys?

We also hold in stock replacement keys for our products for up to 5 years after purchase, so we can get you quick access should you lose your keys. Each product carries a unique serial number, and this enables us to locate your exact key and despatch immediately.



Spare parts

To complement our extensive range, we also hold in stock a vast supply of spare parts for our products. This enables us to deliver quickly and fulfil any replacement requirements.



Castors

Added flexibility for many of our products.

High-quality, heavy-duty castor sets with a unique quick-fit system. Replacements available for simply bolting on yourself, using the pre-drilled holes.



Keys

Product Code	Description
KEY	Replacement Deadlock Key
KEY3	Replacement Deadlock Key - Set 3



Castors

Product Code	Description	Contains	Loading Capacity
CAS	6" Castors (Supply Only) c/w Fixing Kit	2x Fixed, 2x Swivel-Braked Castors	135kg
CAS-HD	6" Heavy-Duty Castors (Supply Only) c/w Fixing Kit	2x Swivel, 2x Swivel-Braked Castors	350kg
LDLF	Castor Direction Lock Adaptors		
CAS-200	Castors for LA1500	2x Swivel, 2x Swivel-Braked Castors	500kg

Shelves

Product Code	Description
SHFC1	Shelf c/w Brackets for TSC1
SHFC2	Shelf c/w Brackets for TSC2 and FC2
SHFC3	Shelf c/w Brackets for TSC3 and FC3
SH4-OX	Shelf for OX4
FRS2	2m Shelf for Forma-Stor™ Tool
TBS4	Shelf for TB2, TB12, TB3 & TBC4
TBDS4	Shelf for TBC4
TBDS5	Shelf for TBC5
TBS4P	PowerShelf for TB2, TB12, TB3 & TBC4
TBDS4P	PowerShelf for TBC4
TBDS5P	PowerShelf for TBC5



Locks

Product Code	Description
LOCK2	Pair 5 Lever Deadlocks
LOCK1	Single 5 Lever Deadlock



Gas struts and lid stay

Product Code	Description
G300	300N Gas Strut
G300S	300N Short Gas Strut
G450	450N Gas Strut
G1000	1000N Gas Strut
G1200	1200N Gas Strut
STAY1	Lid support stay for boxes
STAY2	Lid support stay for chests
SLM2	SlamStop lid stay short
SLM3	SlamStop lid stay long



fittingstor™ bins

Product Code	Description	Available for
FCB	Storage Bins for FittingStor™	FC2, FC3, FC4, FC5, FC6



Do you need any other spare parts? We can help! Talk to our team to find out more.



Find us on social media:



Australia Office

Armorgard Australia PTY Ltd, 100 Silverwater Rd, Silverwater NSW 2128

Call **1300 131 751** Email **sales@armorgard.com.au** **www.armorgard.com.au**



New Zealand Office

Armorgard NZ, 15 Raiha St, Porirua 5022, Wellington, NZ

Call **04 280 6440** Email **sales@armorgard.co.nz** **www.armorgard.co.nz**



UK Head Office

call **+44 (0) 23 9238 0280**

email **sales@armorgard.co.uk**

www.armorgard.co.uk



France Office

call **+ 33 (0) 4 81 16 06 69**

email **commercial@armorgard.fr**

www.armorgard.fr