

THE

CALIPER

VOL 199
Aug-Sep
2024

NZ'S INDUSTRIAL SUPPLY SPECIALISTS



PURCHASE ANY

CRC METAL ARMOUR or CRC RUST CONVERTER PRODUCT

and go in the draw to

WIN

a customised CRC Mini Bike*

TradeZone
New Zealand



Proudly made in NZ



SCAN TO ENTER

* Conditions apply.



Participating Outlets

Your Local TradeZone Outlet





PURCHASE ANY
CRC METAL ARMOUR or CRC RUST CONVERTER PRODUCT
 and go in
 the draw to **WIN**
 a customised CRC Mini Bike*

Proudly made in NZ



SCAN TO ENTER

*Promotion period 1/7/24 to 30/9/24. Entries close 8/10/24. Visit www.crc.co.nz to enter and for full terms and conditions. CRC products included in the promotion 1754703, 1754729, 14610, 3073, 18418 & 3075. Lil Hustler Minibike RRP NZD \$3,250. For more information on Hustler Minibikes please visit Hustler Minibikes.

METAL ARMOUR™

NEW

- Zinc Rich Primer and Sealer
- Contains 85% zinc in dry film
- Bonds directly to bare metal or most surfaces, including painted surfaces
- Ready to paint or leave uncoated
- Ideal for interior and external applications
- Long term corrosion protection – up to 68 months (up to 5 and half years, depending on conditions)
- Ideal for use after rust treatment including CRC Rust Converter



\$19.30
Ex GST

350g

\$80.70
Ex GST

1L

\$22.20 inc GST | CODE 1754703

\$92.81 inc GST | CODE 1754729

RUST CONVERTER

- Ready to use – no additional mixing or chemical additives required
- One easy step – instantly neutralises rust and converts it to a tough black primer
- Long-lasting protection
- Can be painted over
- Seals out moisture



Code	Product Description	Size	Ex GST	Inc GST
3073	CRC Rust Converter	250ml	\$13.00	\$14.95
14610	CRC Rust Converter Aerosol	425g	\$16.50	\$18.98
18418	CRC Rust Converter	1L	\$32.00	\$36.80
3075	CRC Rust Converter	5L	\$143.00	\$164.45

CORROSION PROTECTION



Code	Product Description	Size	Ex GST	Inc GST
2090	CRC White Zinc	400ml	\$16.80	\$19.32
2096	CRC Green Zinc	400ml	\$16.80	\$19.32
2097	CRC Blue Zinc	400ml	\$16.80	\$19.32
2098	CRC Yellow Zinc	400ml	\$16.80	\$19.32
2100	CRC Red Zinc	400ml	\$16.80	\$19.32
2101	CRC Orange Zinc	400ml	\$16.80	\$19.32
2089	CRC Black Zinc	400ml	\$16.80	\$19.32
2102	CRC Clear Zinc	400ml	\$16.80	\$19.32
2085	CRC Zinc It	350ml	\$21.50	\$24.73
2087	CRC Bright Zinc	400ml	\$19.00	\$21.85
2092	CRC Stainless Steel + Zinc	400ml	\$23.00	\$26.45
2125	CRC Zinc It	500ml	\$23.00	\$26.45
2129	CRC Black Zinc	500ml	\$18.00	\$20.70
2130	CRC Zinc Blaster	500ml	\$21.50	\$24.73



www.crc.co.nz



EVAPOR-RUST® | Now Available in 20L

- Non-toxic, non-caustic & non-corrosive
- Powerful heavy-duty formula for even the toughest rust
- Reusable with long lasting efficacy
- No fumes or bad odours, non-flammable
- Will not harm unruined steel, safe on other metals
- Will not affect plastic, PVC, Viton and non-oxide-based paints
- Just soak, rinse, & reuse!

Ideal for bulk applications, Corrosion bath, Engine block, Industrial tow bar, Engine gear & any large automotive and industrial components.

Code	Size	Ex GST	Inc GST
1753336	500g	\$17.20	\$19.78
EVR1	1L	\$18.50	\$21.28
EVR5	5L	\$45.00	\$51.75
EVR20	20L	\$156.00	\$179.98



See product in use
scan the QR code!



Reduce your Food Safety risk with CRC

The CRC GREENLIGHT™ Food Safety Program can either simplify or improve on your current QA auditing programs through the introduction of:

- The CRC range of MPI & NSF approved maintenance products
- On-site central point for audit documentation - SDS, TDS, MPI, NSF Certification, and Allergen Certificates
- A visual food safety identification program
- Site survey and assessment
- On-going updates to ensure you remain at the highest level of regulatory compliance, inventory assessment & management with an aim to reduce costs

Get in touch with your local TradeZone store sales team to discuss Greenlight™ further.

Code	Product Description	Size	Ex GST	Inc GST
3420	CRC Exoff Food Grade Degreaser & Parts Cleaner	750ml	\$14.25	\$16.39
3043	CRC Food Grade Silicone Spray	284g	\$17.50	\$20.13
3102	CRC Food Grade Co Contact Cleaner	400ml	\$25.55	\$29.38
3091	CRC Food Grade Chain Lube	340g	\$26.50	\$30.48
35905	CRC Food Grade Anti-Seize	227g	\$31.50	\$36.23
3103	CRC Food Grade Contaminant & Label Release	400ml	\$20.50	\$23.58
1752351	CRC Food Grade Heavy Chain & Meat Rail Lube	500ml	\$20.50	\$23.58
35600	CRC Food Grade Multi-Purpose Grease	397g	\$34.00	\$39.10
3003	CRC Food Grade 5.56	400ml	\$15.90	\$18.29
3037	CRC Food Grade Silicone Grease	75ml	\$13.90	\$15.99
3086	CRC Food Grade Penetrating Oil	312g	\$15.80	\$18.17
35610	CRC Food Grade Synthetic Grease	397g	\$24.50	\$28.18
3038	CRC Food Grade White Grease	284g	\$29.50	\$33.93



Purchase any SMARTWASHER & START-UP KIT & get a bonus CRC Entertainers Pack*

*Includes a CRC Apron, a CRC Vintage Cooler Box & a CRC BBQ Tool Set.

SmartWasher® BIOREMEDIATING parts washing system

Code	Product Description	Ex GST	Inc GST
SW-23-4	Starter Kit SW-23 SW-4 FL-4	\$4,050.00	\$4,657.50
SW-28-4	Starter Kit SW-28 SW-4 FL-4	\$4,600.00	\$5,290.00
SW-37-4	Starter Kit SW-37 SW-4 FL-4	\$5,500.00	\$6,325.00
SW-37-X1	Starter Kit SW-37 SW-1 FL-4	\$5,750.00	\$6,612.50



SCAN TO LEARN MORE



*Visit crc.co.nz for full CRC and gift terms and conditions. Promotion period: 01/07/2024 to 30/09/2024.



www.crc.co.nz



1/2" Dr 44pc Combination Socket Set

Sockets 10 to 36mm, 1/2" to 11/8", assorted drive accessories
KBT2768

\$220⁰⁰
 + GST
 \$253.00 GST Incl.



3/8" Dr 74pc Metric Tool Set

This Powerbuilt portable tool set contains a versatile range of hand tools for many applications around the workshop, job site or home.
KBT2765

\$329⁰⁰
 + GST
 \$378.35 GST Incl.



POWERBUILT®

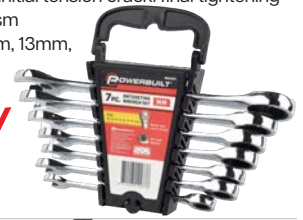
7pc Metric Reversible Gear Spanner Set

- Gear spanners are ideal for fast & speedy loosening/tightening of nuts, with an open end for initial tension crack/final tightening
- New 90-Tooth gear mechanism
- New set includes 10mm, 12mm, 13mm, 14mm, 16mm, 17mm, 19mm

WRS3307H

\$65⁰⁰
 + GST
 \$74.75 GST Incl.

NEW



MST188X

Inverter Welder



- 180 Amp output
- MIG /Stick /TIG welder
- Fitted 10 Amp plug
- Digital LED display
- DC TIG lift arc start
- Excellent arc stability
- Gas /gasless operation
- 2T / 4T trigger latching
- Stepless amperage control
- Generator safe
- Suits D100/D200 spools
- Spool gun ready



\$1125⁰⁰
 + GST
 \$1,293.75 GST Incl.

Bundle Includes:
 MST-188X Welder, Weldsafe Platinum Welding Helmet, Bossweld Welder Trolley and Welding Gloves
BW699188WP



3000kg Garage Jack & 1500kg Jack Stands Combo

Jack Lifts: 140mm to 520mm

- Heavy duty design with superior lift capacity
- Extra wide frame and wheel for stability
- Features two fixed and two castor wheels

Axle Stands support: 278mm to 428mm

- 10 Height settings, Supplied per pair

WTC3015



\$374⁰⁰
 + GST
 \$430.10 GST Incl.

Hydraulic Bottle Jacks

- HD oversized steel bases for strength and durability
- Fully welded base prevents leaking
- Forged steel saddle and cast handle socket



NEW 50TON

	MODEL		+ GST	GST Incl.
WTB10000	11 TON, Lift: 230mm to 460mm		\$86 ⁰⁰	\$98.90
WTB20000	22 TON, Lift: 260mm to 430mm		\$220 ⁰⁰	\$253.00
JGS3506	50 TON, Lift: 236mm to 356mm		\$234 ⁰⁰	\$269.10



GW GEARWRENCH®

10 PC WRENCH SET COMBINATION RATCHETING STUBBY TRAY METRIC 9520D

- 72-tooth ratcheting box end needs a minimal 5° to move fasteners vs. 30° for standard wrenches.
- Off-corner loading design on box end provides better grip & reduces fastener rounding.
- Thin head and beam provide greater access in confined work areas



METRIC

\$219⁰⁰
 +GST
\$251.85 INCL. GST

38 PC 1/4" & 3/8" INCH METRIC AND SAE SOCKET SET 83067N

- 1/4" Drive 120XP Ratchet
- 1/4" Drive 6" (152mm) Wobble Extensions
- 1/4" Drive 6 Pt. Metric Sockets: 4, 5, 6, 7, 8, 9, 10mm



SAE METRIC

1/4" 3/8"

\$169⁰⁰
 +GST
\$194.35 INCL. GST

28 PC 1/4" DRIVE 6 POINT METRIC & SAE SOCKET SET 83064N

- 1/4" Drive 120XP Ratchet
- 140mm(5.5") Breaker Bar
- Wobble Extension 51mm(2"), 152mm(6")
- 1/4" Drive Universal Joint
- Standard Metric Sockets: 4-14mm
- Deep Metric Sockets: 8, 10, 12, 13, 14mm
- SAE Sockets: 3/16", 7/32", 1/4", 9/32", 5/16", 11/32", 3/8", 7/16"



SAE METRIC

1/4"

\$109⁰⁰
 +GST
\$125.35 INCL. GST

4 PC BOLT BITER SCREW EXTRACTOR SET 84787

- Tapered side and tip cutting edges for powerful and consistent extraction
- High strength steel provides up to 50 times longer life
- Bi-directional design loosens or tightens damaged fasteners



\$49⁰⁰
 +GST
\$56.35 INCL. GST

42 PC RATCHETING TAP & DIE SET METRIC 3886

- Set includes:
- Medium ratcheting "T" wrench
 - Small and medium tap adapters
 - Medium Hex die adapters
 - Thread gauge, #5 Screwdriver
 - Taper taps, Plug taps
 - NF plug taps, NC plug taps
 - BSP Tap
 - NC Hex die
 - NF Hex die and BSP Hex die



METRIC

\$169⁰⁰
 +GST
\$194.35 INCL. GST

107 PC 1/4", 3/8" & 1/2" DRIVE METRIC/SAE SOCKET & TOOL SET 83998

- 1/4" Drive 90T Ratchet, spinner handle, 2" & 6" wobble extensions, universal joint, bit adapter
- 36pc mixed bit set
- 1/4" Drive standard 6pt sockets 4,5,6,7,8,9,10,11,12,13,14mm



METRIC SAE

1/2" 1/4" 3/8"

\$369⁰⁰
 +GST
\$424.35 INCL. GST

111 PC 1/4", 3/8" & 1/2" DRIVE METRIC/SAE SOCKET & REVERSIBLE RATCHETING SET 83069

- 1/4" Drive 6 Point Standard Sockets - 4-13mm
- 1/4" Drive 6 Point Deep Sockets - 4-13mm
- 1/2" Drive 12 Point Standard - 10-32mm



METRIC SAE

1/2" 1/4"

\$329⁰⁰
 +GST
\$378.35 INCL. GST

HIKOKI



36V Premium Brushless 3-Tool Kit

KC363DRBL(GRZ)
Supplied with 2x 1080W Multi Volt batteries, Rapid Charger and Carry Case. Compact, powerful, brushless model with superior handling

\$1599⁰⁰ +GST
\$1,838.85 INCL. GST



18V Brushless Drill, Wrench & Grinder Kit

KC183DA(GRZ)
Supplied with 2x 18V 4.0Ah Li-ion Compact Batteries (BSL1840M), Smart Charger (UC18YFSL) and Cases.

\$1239⁰⁰ +GST
\$1424.85 INCL. GST



18V Cordless 450g Grease Gun Kit

AL18DA(GRZ)
■ Compact and lightweight
■ Supplied with 1x 1080W MULTI VOLT Battery (BSL36A18X), Rapid Charger, Case, Shoulder Belt, Clam Coupling.

\$849⁰⁰ +GST
\$976.35 INCL. GST

36V Brushless 1/2" 1400Nm Impact Wrench BARE TOOL

WR36DG(G4Z)



\$709⁰⁰ +GST
\$815.35 INCL. GST

36V Brushless 3/4" 1900Nm Impact Wrench BARE TOOL

WR36DF(G4Z)



\$739⁰⁰ +GST
\$849.85 INCL. GST



18V Cordless 450g Grease Gun Bare Tool

AL18DA(G4Z)

■ Variable flow dial with up to 10 pre-set discharge pressure settings
■ 3-way filling system : Grease cartridge, containers or direct filling
■ 1200mm flexible hose length for quick easy access into tight spaces
■ High discharge pressure (690 bar)

\$559⁰⁰ +GST
\$642.85 INCL. GST

36V Brushless 20mm Heavy Duty Impact Drill Bare Tool

DV3620DA(G4Z)



\$429⁰⁰ +GST
\$493.35 INCL. GST

36V Brushless 125mm Angle Grinder BARE TOOL

G3613DVF(G4Z)



\$369⁰⁰ +GST
\$424.35 INCL. GST

T's & C's apply. Offer via redemption. Not in conjunction with any other bonus offer. For details and to redeem go to hikoki.co.nz/promotions/

metabo®

Angle Grinder 125mm 1700W INOX

WEV17-125QUICKINOX

■ Tool free, fast disc change at the touch of a button
■ Low-vibration side handle Metabo VibraTech



\$439⁰⁰ +GST
\$504.85 INCL. GST

125mm 1350W Angle Grinder

W13-125QUICK

■ Low-vibration side handle Metabo VibraTech(MVT)
■ Tool-free adjustable guard; twist-proof



\$329⁰⁰ +GST
\$378.35 INCL. GST

Die Grinder 710 W 1/4" 10000-30500 RPM

GE710PLUS

■ Universal die grinder with long grindings spindle for deburring, milling, grinding & cutting, also in hard-to-reach places
■ Spindle lock for simple change of tools



\$469⁰⁰ +GST
\$539.35 INCL. GST

Angle Grinder 125mm 1400W

WEQ1400-125

■ Tool free, fast disc change at the touch of a button with the Metabo M-Quick-System
■ Electronic overload protection



\$259⁰⁰ +GST
\$297.85 INCL. GST

2300W 355MM Metal Cut-Off Saw

CS22-355

■ Quick clamping device with variable mitre setting for angled cuts from -15° to 45°



\$399⁰⁰ +GST
\$458.85 INCL. GST

350W 150mm Random Orbital Sander

SXE450TURBOTEC

■ Patented adjustable "Duo" oscillating circuit setting
■ Dust-proof ball bearings
■ 4200 – 11,000 RPM



\$429⁰⁰ +GST
\$493.35 INCL. GST

Dirty Dog Safety Sunglasses, Coal Black Green

Dirty Dog safety sunglasses are the ultimate in safety eyewear protection. They are super strong yet lightweight & are designed for maximum comfort & protection from physical hazards and glare.



52856

\$39¹³ +GST

\$45.00 GST Incl.

Dirty Dog Safety Sunglasses, Wicked Black Blue Mirror/ Green

Dirty Dog sunglass lenses consist of layer upon layer of advanced technology bonded together to maximise UV protection and enhance the clarity of your vision for safe and durable wearing.



53789

\$39¹³ +GST

\$45.00 GST Incl.

Dirty Dog Safety Sunglasses, Grill Black Green

Dirty Dog Safety Sunglasses meet the Medium Impact requirements of the Australian/New Zealand Standards AS/NZS 1337.1:2010



53210

\$39¹³ +GST

\$45.00 GST Incl.

Dirty Dog Safety Sunglasses, Brace Satin Black Grey

The lenses contain 4 UV filters for optimum UV blockage. All Dirty Dog lenses are treated with two specially developed hard coatings to prevent the deterioration of lens clarity.



53711

\$39¹³ +GST

\$45.00 GST Incl.

esko

PROTECTING NEW ZEALAND'S WORKFORCE



RED ROOSTER FULLY COATED GLOVE

E350HC

- Tough, flexible and grippy in the wet
- Nylon form-fitting liner, elasticated cuff
- Contact heat rated to 100 degrees
- Sizes: S-2XL

\$9.55 +GST EACH

\$10.98 INC GST



High-Five

HIGH FIVE INDUSTRIAL BLACK NITRILE GLOVE

MDNHD

- Superior puncture resistance
- Latex free, 100% nitrile
- 100pc/box
- Sizes S-2XL

\$16.75 +GST EACH

\$19.26 INC GST

AIR8

AIR8 MULTIGAS RESPIRATOR KIT

A8GRKCB

- Lightweight - all day comfort
- A1B1E1K1 protection against multiple gas/vapour hazards
- Available in sizes: small, medium, large

\$64.15 +GST EACH

\$73.77 INC GST

MAX 28

MAX28 BLUETOOTH EARMUFF

E-MAX28

- Stream 4.0 Bluetooth hearing protector
- Simple Bluetooth pairing
- Easy-to-use side mounted controls
- Make and receive phone calls

\$84.40 +GST EACH

\$97.06 INC GST

Weldmatic 200+

200 A single phase MIG, Stick & TIG welder
200 A at 24 V 15% Duty Cycle
IP23S safety rating
Portable - Only 17kg
Integrated wire feeder -
Suits 1kg and 5kg spools
Welds up to 8mm steel, stainless steel or aluminium



WIA

CP142-1

\$1,849⁰⁰ +GST

\$2,126.35 GST Incl.

Weldarc 200 AC/DC

200 A single phase Stick & TIG welder
200 A at 18 V 30% Duty Cycle
IP21S safety rating
Portable - Only 17kg
AC TIG for aluminium
Welds up to 8mm aluminium or steel
HF Start
Adjustable pulse mode



WIA

MC114-0

\$2,278⁷⁰ +GST

\$2,620.51 GST Incl.

Weldarc 145

145 A single phase Stick & TIG welder
145 A at 25.8 V 20% Duty Cycle
IP23S safety rating. Adjustable Arc Force. Adjustable Hot Start
Portable - Only 7kg (comes with a shoulder strap and carry case)
DC Lift Arc TIG Start
Power Factor Correction



WIA

MC111-0

\$507⁸⁵ +GST

\$584.03 GST Incl.

Vortex HDV PAPR System

The next level of welding respiratory protection. 6 air distribution points & 3 air speeds. 2x lightweight lithium-ion batteries. One for use & one for charging. 3 point back pack style shoulder straps. Lightweight low profile blower unit design. Only 1362g. LCD screen displays fan speed, filter time, battery level and current time.



Miller

305001

\$2,278⁸⁵ +GST

\$2,620.68 GST Incl.



WHO WE ARE

ph7 is New Zealand's leading provider of HAZCHEM Safety Solutions.

We specialise in HAZCHEM safety solutions for the safe storage, handling, and response of hazardous substances. We've got everything you need to perform your job safely.

Our sales team covers the whole country and we're available for product training and site visits to your customers to help them meet their legal obligations around the management of their hazardous substances.

Check us out online at www.ph7.co.nz or call us on 0800 323 223.

ph7 - your HAZCHEM Safety Experts.

OUR PRODUCT RANGE



HAZCHEM STORAGE

Flammable goods cabinets, oily & solvent rag waste bins, spill pallets and decks, and outdoor DG storage containers.



HAZCHEM PPE

Chemical protective coveralls, disposable and chemical handling gloves, half and full-face respirators and filters, powered air respirators (PAPR), with a range of hoods, helmets, and welding helmets.



HAZCHEM RESPONSE

Spill kits and industrial absorbents, emergency showers and eyewashes.



HAZCHEM SIGNAGE

Dangerous Goods diamonds, tank and building signage.



HAZCHEM SERVICES

Respirator fit testing, gas suit pressure testing, HAZCHEM training, and spill response training.

OUR DEALS

CODE: ASOPAD

OIL-ONLY ABSORBENT PADS

Each pad absorbs up to 1.4L of oil, fuels and solvents while repelling water. Quickly and effectively clean up spills and leaks.

\$191
+GST

PER CARTON

100 pads per carton



FREE PACK OF 10 OIL PADS WITH EVERY PURCHASE VALUED AT \$20.30 RRP!

CODE: PRM0033-[SIZE]
e.g: PRM0033-L

AGRICULTURAL SPRAYERS KIT

PPE kit for safely spraying pesticides. Includes AlphaTec Coverall, Shigmatsu RS01 Half Mask with A1P2 Filters and box of black nitrile gloves.

\$120.85
+GST

PER KIT

Available in sizes M - 3XL



CODE: CA-99909

AERGO PAPR AGRICULTURAL SPRAYERS KIT

Upgraded PPE kit for safely spraying pesticides. Includes CleanAIR short hood, AerGO PAPR kit, one pair of A1PRSL filters, flexi hose, and duffel bag.

\$2139
+GST

PER KIT



FREE EXTRA PAIR OF A1PRSL WITH EVERY PURCHASE VALUED AT \$84.90 RRP!

Starrett®

View the video!



SHARP DEALS!

Whether you're cutting wood, metal, or other materials, Starrett Recip Blades provide unmatched performance and durability.

STARRETT, QUALITY PRODUCTS YOU CAN TRUST!

HOLE SAW KITS!



MOTHER OF ALL HOLE SAW KITS

Contains: FCH 16, 20, 25, 32, 40, 52mm MPH 40, 51, 54, 73, 76, 83, 92, 95mm A1E, A17-38E, A7, KA19-E.
KMX14041-E

\$360.00
Plus GST
\$414.00 GST incl.



BONUS!

Starrett Chopping Board & 2pc Knife Set SKK-2WD RRP\$110.00



KWIK CHANGE DELUXE FAST CUT KIT

Contains: 16, 20, 22, 25, 32, 40, 51, 64, 83, 89 & 92 mm, A6 Arbor.
KFC11132

\$350.00
Plus GST
\$402.50 GST incl.



BONUS!

Starrett 6 Piece Knife Set & Wireless Meat Probe RRP\$399

RECIP BLADES!



12 X RECIP BI-METAL & CARBIDE BLADE ASSORTMENT PACK

Selection of metal, multipurpose, carbide grit & demolition blades with a reinforced shank making them highly resistant to breakage.
KRB12-A

\$95.00
Plus GST
\$109.25 GST incl.



BONUS!

Starrett Filleting Knife & Steel Set with carry bag RRP\$49.00

JIGSAW BLADES!

JIGSAW BLADE KIT

Metal Cutting Assortment Pack: Includes one each: BU41014, BU214, BU224, BU224S and BU232.
BU3



\$15.00
Plus GST
\$17.25 GST incl.

JIGSAW BLADE ASSORTMENT

Combination of Metal, Wood, Multi Purpose, Dual Cut & Carbide BU4.

\$69.00
Plus GST
\$79.35 GST incl.



SAFETY KNIFE!



HIDDEN EDGE SAFETY KNIFE

This innovative knife keeps the blade safely tucked away when not in use, easy action lever.

S011

\$30.00
Plus GST
\$34.50 GST incl.

STARRETT, QUALITY PRODUCTS YOU CAN TRUST!

Starrett®

BONUS 8M TAPE!



HEAVY DUTY HACKSAW FRAME

300mm complete with blade, rubber moulded grip.

N145

\$42⁰⁰
Plus GST
\$48.30 GST incl.

BONUS!

Starrett 8m Tape Measure
KTS1-8M-N RRP \$25.00

MITRE PROTRACTOR

175mm (7") Plastic Mitre Protractor takes error prone calculations out of the process of doing mitre cuts. Ideal for measuring & transferring of angles.

505P-7

\$55⁰⁰
Plus GST
\$63.25 GST incl.

BONUS!

Starrett 8m Tape Measure
KTS1-8M-N RRP \$25.00

18C AUTOMATIC CENTER PUNCH

The Starrett Automatic Center Punch with Adjustable Stroke features a lightweight, knurled steel handle for a positive grip and easy handling. 130mm (5 1/4") Length, 17mm (11/16") Diameter, Heavy Duty.

18C

\$49⁰⁰
Plus GST
\$56.35 GST incl.



INTRODUCTORY OFFER



TradeZone
New Zealand

Features numbers that read across the tape rather than along the tape on a WHITE blade for clearer reading.

\$19⁰⁰
Plus GST
\$21.85 GST incl.

TRADEZONE 8M TAPE MEASURE

High carbon steel blade and produced of high impact resistant ABS plastic for extended case life.

KTX1-8M-WV



8 PIECE KNIFE SET

Ideal for the Chef, Fishermen or Butchers. Professional Quality, Full traceability and NSF certified.

BKK-8WA

\$90⁰⁰
Plus GST
\$103.50 GST incl.

BONUS!

Starrett Filleting Knife & Steel Set with carry bag RRP\$49.00



TOOL BAG SMALL & LARGE

Heavy duty construction, with loads of storage options.

Large: 410L x 240W x 270H
K-BGL2016

Small: 300L x 170W x 220H
K-BGS2016

\$55⁰⁰
Plus GST
\$63.25 GST incl.

\$30⁰⁰
Plus GST
\$34.50 GST incl.

2362 COMBO DEAL!

2362 X 19MM BI-METAL BANDSAW BLADE COMBO PACK

Pack includes:

- 2 x 6-10TPI
- 2 x 8-12TPI
- 2 x 10-14TPI

TOTAL: 6 X SAW BLADES



BS2362X19-6

\$340⁰⁰
Plus GST
\$391.00 GST incl.

BONUS!
6 Piece Steak Knife Set

6 piece steak knife set, with German stainless steel blades and Zebra wood riveted handles (SKK-6WD) RRP\$85.00.



1638 COMBO DEAL!

1638 X 13MM BI-METAL BANDSAW BLADE COMBO PACK

Pack includes:

- 2 x 14TPI
- 2 x 18TPI
- 2 x 6-10TPI
- 2 x 10-14TPI

TOTAL: 8 X SAW BLADES



S1638X13-8

\$260⁰⁰
Plus GST
\$299.00 GST incl.

BONUS!
6 Piece Steak Knife Set

6 piece steak knife set, with German stainless steel blades and Zebra wood riveted handles (SKK-6WD) RRP\$85.00.



Cobra Pliers Set 3pc

The perfect set for working on nuts, bolts and pipe - of all sizes. Handy durable nylon pouch. Made in Germany



\$216⁵² +GST

\$249.00 GST Incl.

001955S8

Pliers Set 4pc - Construction

If you're a builder, then this is an awesome set designed for you. Contents:
1x Twin Grip Screw Removal Pliers
1x End Nippers
1x Combination Pliers
1x Cobra Water Pump Pliers



\$207⁸³ +GST

\$239.00 GST Incl.

002008CN

Long Nose Pliers

Distortion-tolerant, elastic tips even when twisted ensures the tips stay in perfect alignment for maximum grip.



Code	Size	Ex GST	Incl.
2611200	200mm Straight	\$65.13	\$74.90
2621200	200mm Bent	\$69.48	\$79.90

High Leverage Diagonal Cutter

Very hard working and long lasting cutters that are an essential in everyone's tool kit.



Code	Size	Ex GST	Incl.
7401200	200mm	\$74.70	\$85.90
7401250	250mm	\$94.78	\$109.00

Electronic Super Knips 125mm

Cuts fine wire, electronic components & cable ties. Flush jaws eliminate the chance of scratches and cuts from cable ties. Made in Germany



\$57³⁰ +GST

\$65.90 GST Incl.

7803125

TwinGrip Pliers 200mm

Fast removal of stripped and rounded fasteners. Works on screws, threaded rod, and nuts/bolts up to 22mm diameter. Made in Germany.



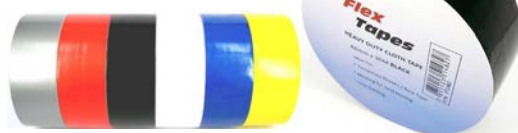
\$69⁴⁸ +GST

\$79.90 GST Incl.

8201200

Heavy Duty Cloth Tape -48mmx30M

Ideal for masking products to be sand blasted, lane marking, tarp repairs, display industry and perfect as a race tape. And many other applications where a heavy duty cloth tape is required.



\$7⁵⁵ +GST

\$8.68 GST Incl.

FT1481 Silver FT1483 White FT1485 Yellow
FT1482 Black FT1484 Red FT1486 Blue

Alpha Silver Series Drillset 1-13mm

118 Degree Split Point Premium Grade M2 HSS Fully Ground 25 Piece Set 1-13mm in 0.5mm increments



\$149⁰⁰ +GST

\$171.35 GST Incl.

SM25PBS

Tajima

TAJIMA PULL STROKE SAW

- Japanese style tempering.
- Premium grade steel.
- Impulse hardened teeth.
- Ergonomic curved handle with elastomer no-slip grip.
- Quick-release blade retainer.

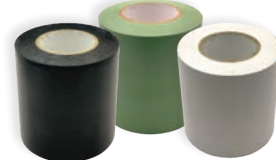


Code	Description	Price Ex.	Price Inc.
PUL265	Tajima Pull Saw PUL265	\$39.40	\$45.31
PUL300	Tajima Pull Saw PUL300 12TPE	\$39.40	\$45.31

Silage Tape 96mm x 30m

tape spec
NEW ZEALAND TAPE SPECIALISTS

Codes	Colour	Price Ex.	Price Inc.
0033-096	Black	\$14.35	\$16.50
0037-096	Green	\$14.35	\$16.50
0035-096	White	\$14.35	\$16.50



- Plasticised PVC tape coated with a special primed rubber-based adhesive.
- Silage Tape is waterproof & UV-resistant.
- Can be used on silage bags and tubes and other repair jobs around the farm.

Mobil Grease Cartridge 450gm

Mobilgrease XHP™ 220 greases are extended service lithium complex greases intended for a wide variety of applications and severe operating conditions. These greases were designed to outperform conventional products by applying cutting-edge, proprietary, lithium complex manufacturing technology.

Mobil



1000106

Mobil 600 XP 320, 20L

The Mobilgear 600 XP Series are extra high performance gear oils having outstanding extreme pressure characteristics and load-carrying properties, intended for use in all types of enclosed gear drives with circulation or splash lubrication systems. Mobilgear 600 XP Series is designed to stay ahead of the changing needs of gearbox technology.

Mobil



132820

\$11⁶⁰ +GST

\$13.34 GST Incl.

\$181¹⁶ +GST

\$208.33 GST Incl.



RELIABLE & ESSENTIAL AUTOMOTIVE EQUIPMENT

ALEMLUBE 450g TRIGGER ACTION GREASE GUN 660AN

- Grease pressures of up to 8,500psi (86bar)
- Delivers 1.1g of grease per stroke
- Ever-Flow System enables the gun to be used with thick tacky greases up to NLGI2
- Manufactured in Germany



4
YEAR
WARRANTY

\$139.10
+GST
\$159.97 GST Incl

ALEMLUBE 530ml CAPACITY OIL SUCTION GUN 21040

- Ideal for the draining & filling of diffs, gear boxes and engine blocks
- A double 'V' packing ensures that oil does not leak through the rear of the gun
- 530mL capacity



\$46.50
+GST
\$53.48 GST Incl

ALEMLUBE 12V DIESEL REFUELLING TANK KIT 52000

- Capable of flow rates of up to 50L/min
- Includes 4m of antistatic fuel delivery hose, 2m of battery cable, a stainless steel & brass fuel filter & a manual nozzle
- Maximum head capacity of 15m
- Self priming vane pump includes a built-in bypass



\$559.00
+GST
\$642.85 GST Incl

ALEMLUBE MANUAL SHUT-OFF DIESEL NOZZLE 52007

- Capable of flow rates up to 150L/min
- Suitable for gravity feed applications & applications with pressures of up to 140psi (10bar)
- Ideal for farm tank applications
- Hanging clip helps to reduce the possibility of diesel fuel contamination & nozzle damage
- 1" BSP(f) swivel included



\$71.50
+GST
\$82.23 GST Incl

ALEMLUBE POLYPROPYLENE ROTARY DRUM PUMP 301A

- Suitable for 60 or 205L drums & bulk tanks
- Flow rates of up to 20L/min
- Suitable for the transfer of herbicides, pesticides, chemicals & mild detergents
- Unique, rotating 2 piece discharge spout assists fluid transfer
- Polypropylene, teflon & stainless steel construction
- Lightweight at 2.3kg



\$178.75
+GST
\$205.56 GST Incl

PIUSI 1" MECHANICAL DIESEL FUEL METER 51008

- Accurate between flow rates of 20L/min & 120L/min
- Mechanical gear meter accurate to ±1.0%
- Maximum working pressure of 142psi (10bar)
- Suitable for gravity feed or pump applications
- 1" BSP(f) inlet/outlet ports
- Also suitable for use with kerosene



\$369.85
+GST
\$425.33 GST Incl

EL SERIES 20KG GREASE PUMP KIT G100120

- Heavy duty grease control valve
- 4m long hose assembly
- Maximum fluid pressure of 5,800psi (400bar)
- All types of grease up to NLGI2
- Delivers up to 600g/min
- Tested to up to 24,000kg
- Air inlet pressure from 70psi (5bar) to 150psi (10bar)



1
YEAR
WARRANTY

\$831.16
+GST
\$955.83 GST Incl

ALEMLUBE 1L BRAKE CLEANER SPRAYER 6603A

- Large filling opening
- Safety valve at 36psi (2.5bar) with depressurisation option
- Easy tool free maintenance
- Strong translucent bottle with level indicator
- Ergonomic design
- Not suitable for use with acids



\$69.20
+GST
\$79.58 GST Incl

2
YEAR
WARRANTY

*Applies to the vast majority of Alemlube products unless otherwise indicated.

JOSCO

BLU-MOL®

BORDO

KOMELON®

JOSCO HAND BRUSH 4R PLASTIC LONG HANDLE

402 **Josco**



\$8.25 EXCL.
\$9.49 INCL. GST

JOSCO HAND BRUSH 4R STAINLESS PLASTIC LONG HANDLE

422 **Josco**



\$12.05 EXCL.
\$13.86 INCL. GST

JOSCO HAND BRUSH 4R BRASS PLASTIC LONG HANDLE

442 **Josco**



\$14.30 EXCL.
\$16.45 INCL. GST

JOSCO HAND BRUSH PLASTIC HANDLE

Josco



STEEL BRUSH (898S) PRICE: **\$4.50** EXCL.
\$5.18 INCL. GST

BRASS BRUSH (898B) PRICE: **\$8.30** EXCL.
\$9.55 INCL. GST

STAINLESS BRUSH (898SS) PRICE: **\$9.45** EXCL.
\$10.87 INCL. GST

JOSCO CUP BRUSH CR 75XMT 0.30MM

Josco

REGULAR (153R) PRICE: **\$16.45** EXCL.
\$18.92 INCL. GST

ST/STEEL (153MSS) PRICE: **\$52.20** EXCL.
\$60.03 INCL. GST

BRASS (153MBR) PRICE: **\$34.35** EXCL.
\$39.50 INCL. GST

JOSCO CUP BRUSH TK18 75X1RXMT

Josco

0.35MM (150R) PRICE: **\$20.90** EXCL.
\$24.04 INCL. GST

0.50MM (166BM) PRICE: **\$23.15** EXCL.
\$26.62 INCL. GST

0.50MM (SS) (166BSS) PRICE: **\$44.10** EXCL.
\$50.72 INCL. GST

KOMELON 30M X 13MM UNIGRIP FLX F/GLASS OPEN TAPE - DUAL SIDED

KOMELON



30M X 13MM (TA3500) PRICE: **\$41.90** EXCL.
\$48.19 INCL. GST

50M X 13MM (TA3510) PRICE: **\$58.30** EXCL.
\$67.05 INCL. GST

100M X 13MM (TA3520) PRICE: **\$95.90** EXCL.
\$110.29 INCL. GST

BORDO HSGT TAP 3PC SET (BOT/INT/TAP)

BORDO

5MM X 0.8MM (3020-5.00TS) PRICE: **\$41.05** EXCL.
\$47.21 INCL. GST

6MM X 1.00MM (3020-6.00TS) PRICE: **\$42.55** EXCL.
\$48.93 INCL. GST

12MM X 1.75MM (3020-12.00TS) PRICE: **\$85.10** EXCL.
\$97.87 INCL. GST

10MM X 1.5MM (3020-10.00TS) PRICE: **\$61.20** EXCL.
\$70.38 INCL. GST

8MM X 1.25MM (3020-8.00TS) PRICE: **\$44.05** EXCL.
\$50.66 INCL. GST

BLU-MOL VERTEX SPRING DIVIDER

BLU-MOL

6" 100MM: M214
8" 200MM: M215
10" 250MM: M216
12" 300MM: M217



6" 100MM PRICE: **\$18.30** EXCL.
\$21.05 INCL. GST

8" 200MM PRICE: **\$23.15** EXCL.
\$26.62 INCL. GST

10" 250MM PRICE: **\$31.55** EXCL.
\$36.28 INCL. GST

12" 300MM PRICE: **\$36.15** EXCL.
\$41.57 INCL. GST

KOMELON 8M X 25MM ECO POCKET MEASURING TAPE

KOMELON

TA3400



\$18.60 EXCL.
\$21.39 INCL. GST

BLU-MOL VERTEX CALIPER (INSIDE)

BLU-MOL



6" 150MM (M202) PRICE: **\$16.80** EXCL.
\$19.32 INCL. GST

8" 200MM (M203) PRICE: **\$23.15** EXCL.
\$26.62 INCL. GST

10" 250MM (M204) PRICE: **\$31.50** EXCL.
\$36.23 INCL. GST

BALL PEIN HAMMER

BLU-MOL



12OZ (H332) PRICE: **\$17.20** EXCL.
\$19.78 INCL. GST

16OZ (H334) PRICE: **\$19.50** EXCL.
\$22.43 INCL. GST

40OZ (H340) PRICE: **\$29.20** EXCL.
\$33.58 INCL. GST

32OZ (H338) PRICE: **\$27.65** EXCL.
\$31.80 INCL. GST

24OZ (H336) PRICE: **\$26.15** EXCL.
\$30.07 INCL. GST

BLU-MOL VERTEX COMBINATION SQUARE SET - METRIC

M404 **BLU-MOL**



\$118.10 EXCL.
\$135.82 INCL. GST

BLU-MOL VERTEX VERNIER CALIPER CARBON STEEL 150MM/6"

M400 **BLU-MOL**



\$24.70 EXCL.
\$28.41 INCL. GST

BLU-MOL VERTEX CALIPER (OUTSIDE)

BLU-MOL



6" 150MM (M208) PRICE: **\$16.35** EXCL.
\$18.80 INCL. GST

8" 200MM (M209) PRICE: **\$23.30** EXCL.
\$26.80 INCL. GST

12" 300MM (M211) PRICE: **\$36.30** EXCL.
\$41.75 INCL. GST

BLU-MOL VERTEX DIGITAL VERNIER CALIPER, LARGE SCREEN, 150MM/6"

M780 **BLU-MOL**



\$71.65 EXCL.
\$82.40 INCL. GST

BLU-MOL VERTEX VERNIER CALIPER, S/STEEL, 150MM/6"

M500 **BLU-MOL**



\$40.30 EXCL.
\$46.35 INCL. GST

BLU-MOL VERTEX DIGITAL VERNIER CALIPER, 150MM/6"

M700 **BLU-MOL**



\$57.50 EXCL.
\$66.13 INCL. GST

BLU-MOL VERTEX ENGINEERS CHALK (144PC PER BOX) 4" EACH

C302 **BLU-MOL**



\$39.60 EXCL.
\$45.54 INCL. GST

CHAMPION GJ GRAB KIT - ASSORTED METRIC INT/EXT CIRCLIPS

GKA110



\$43.70
EXCL.

\$50.26 INCL. GST

CHAMPION GJ GRAB KIT - ASSORTED METRIC HIGH TENSILE BOLTS & NUTS

GKA130



\$49.10
EXCL.

\$56.47 INCL. GST

CHAMPION GJ GRAB KIT - ASSORTED IMPERIAL WASHERS

GKA255



\$38.95
EXCL.

\$44.79 INCL. GST

CHAMPION GJ GRAB KIT - ASSORTED IMPERIAL ROLL PINS

GKA285



\$47.90
EXCL.

\$55.09 INCL. GST

CHAMPION GJ GRAB KIT - ASSORTED R-CLIPS

GKA150



\$44.75
EXCL.

\$51.46 INCL. GST

CHAMPION GJ GRAB KIT - ASSORTED SELF TAPPING SCREW, MUSHROOM HEAD

GKA370



\$44.95
EXCL.

\$51.69 INCL. GST

CHAMPION GJ GRAB KIT - ASSORTED METRIC ROLL PINS

GKA290



\$46.15
EXCL.

\$53.07 INCL. GST

CHAMPION GJ GRAB KIT - ASSORTED METRIC FLANGE NUTS

GKA160



\$42.40
EXCL.

\$48.76 INCL. GST

CHAMPION GJ GRAB KIT - ASSORTED METRIC O'RINGS

GKA419



\$45.60
EXCL.

\$52.44 INCL. GST

CHAMPION GJ GRAB KIT - ASSORTED SELF LOCKING METRIC NUTS

GKA195



\$54.75
EXCL.

\$62.96 INCL. GST

CHAMPION GJ GRAB KIT - ASSORTED SELF TAPPING SCREWS, HEX HEAD

GKA300



\$42.60
EXCL.

\$48.99 INCL. GST

CHAMPION GJ GRAB KIT - ASSORTED ROUND HEAD MACHINE SCREWS

GKA552



\$50.40
EXCL.

\$57.96 INCL. GST

CHAMPION GJ GRAB KIT - ASSORTED MULTI-HOLE CLEVIS PINS

GKA38



\$65.80
EXCL.

\$75.67 INCL. GST

CHAMPION GJ GRAB KIT - ASSORTED NYLON CABLE CLAMPS

GKA80



\$49.95
EXCL.

\$57.44 INCL. GST

CHAMPION GJ GRAB KIT - ASSORTED HOSE CLAMPS

GKA42



\$58.55
EXCL.

\$67.33 INCL. GST

CHAMPION GJ GRAB KIT - ASSORTED SELF TAPPING SCREWS, PANHEAD

GKA760



\$51.15
EXCL.

\$58.82 INCL. GST

CHAMPION GJ GRAB KIT - ASSORTED METRIC LYNCH PINS

GKA24



\$49.55
EXCL.

\$56.98 INCL. GST

CHAMPION GJ GRAB KIT - ASSORTED IMPERIAL O'RINGS

GKA420



\$46.60
EXCL.

\$53.59 INCL. GST

CHAMPION GJ GRAB KIT - ASSORTED SPRINGS

GKA92



\$40.85
EXCL.

\$46.98 INCL. GST

RING & O/E 26PC WRENCH SET, TET POUCH, 6 - 32MM

KT1226MRN



26pc

\$323.27
EXCL.
\$371.76 INCL. GST

3PC PLIER SET

KT42213GP01



3pc

\$92.86
EXCL.
\$106.79 INCL. GST

1/4" DRIVE TORQUE WRENCH 55 - 250IN.LB/NM

KT34223-1C



\$85.10
EXCL.
\$97.87 INCL. GST

RING & O/E 12PC STUBBY WRENCH SET, TET POUCH, 8 - 24MM

KT1282MR



12pc

\$82.25
EXCL.
\$94.59 INCL. GST

1/2" DRIVE 8PC DEEP IMPACT SOCKET SET 12 - 24MM

KT4410MP01



8pc

\$89.29
EXCL.
\$102.68 INCL. GST

1/2" DRIVE 25PC DEEP IMPACT SOCKET SET - PLASTIC CASE

KT4435MP



25pc

\$282.74
EXCL.
\$325.15 INCL. GST

1/4" DRIVE 26PC METRIC SOCKET SET

KT2526MR01



26pc

\$97.05
EXCL.
\$111.61 INCL. GST

3/4" DRIVE 14PC IMPACT SOCKET SET 19 - 41MM

KT6414MP



14pc

\$328.33
EXCL.
\$377.58 INCL. GST

3/4" DRIVE 24PC COMBINATION SOCKET SET 12PT

KT6224CR



24pc

\$574.57
EXCL.
\$660.76 INCL. GST

1/2" DRIVE 42PC COMBINATION SOCKET SET 12PT

KT4042CR06



46pc

\$307.80
EXCL.
\$353.97 INCL. GST

ADJUSTABLE CHROME WRENCH

150MM: KT3611-06R
200MM: KT3611-08R
250MM: KT3611-10R
300MM: KT3611-12R



150MM PRICE:

\$25.10
EXCL.
\$28.87 INCL. GST

200MM PRICE:

\$29.83
EXCL.
\$34.30 INCL. GST

250MM PRICE:

\$36.93
EXCL.
\$42.47 INCL. GST

300MM PRICE:

\$48.73
EXCL.
\$56.04 INCL. GST

236PC TOOL SET IN 6 DRAWER BOX (RED)

KT911-003CR



236pc

\$1,299.00
EXCL.
\$1,493.85 INCL. GST

3/4" DRIVE TORQUE WRENCH 150 - 750FT.LB/NM

KT34662-3CG



\$835.71
EXCL.
\$961.07 INCL. GST



OVER 100 YEARS
OF EXPERTISE

ECLIPSE

PROFESSIONAL TOOLS

Spear & Jackson
Since 1760

Eclipse professional tools combine traditional production methods with the latest manufacturing technology and have been selling since 1909.



Automatic Centre Punch

EC-65/171R

150mm
Hand Operated

\$22⁹⁰ +GST

\$26.34 INCL. GST



Extra Wide Jaw Adjustable Wrench

EC-ADJW12WJ

Length 300mm
Jaw Width 60mm

\$100⁹⁵ +GST

\$116.09 INCL. GST



Quick Adjustment Pipe Wrench

EC-EQAPW12

300mm
Maximum Opening at Mid-Jaw: 79mm

\$65¹⁵ +GST

\$74.92 INCL. GST



Colour Coded Hex Key 9 Piece Set

EC-EHK9PS

Size Range: 1.5-10mm
Colour coded for easy identification

\$27⁹⁵ ST

\$32.14 INCL. GST



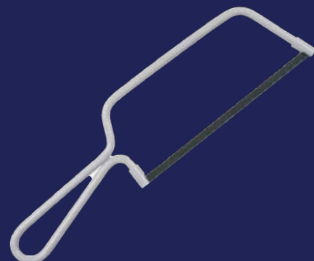
Vice Engineers Offset 150mm

EC-EOV150

150mm
Clamping Force 2200kgf

\$609¹⁵ +GST

\$700.52 INCL. GST



Junior Hacksaw Frame

EC-70-14JR

Length 260mm
Height 67mm

\$14⁹⁵ +GST

\$17.19 INCL. GST



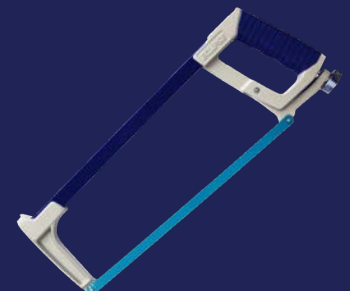
Hacksaw Tubular Professional

EC-20TND

Length 465mm
Height 130mm

\$45⁵⁰ +GST

\$52.33 INCL. GST



Hacksaw Box Frame

EC-422

Length 400mm
Height 135mm

\$52³⁵ +GST

\$60.20 INCL. GST



Bolt Cutter Tubular Professional

Adjustable Jaws
Non Slip Comfort Soft Grips

EC-ETBC14	355mm 5.0mm	\$48.20	\$55.43
EC-ETBC18	460mm 6.4mm	\$51.27	\$58.96
EC-ETBC24	610mm 7.9mm	\$81.87	\$94.15
EC-ETBC30	762mm 9.5mm	\$113.92	\$131.01



Sledge Hammer Timber Handle

1.8kg/4lb - 6.4kg/14lb
Drop Forged Carbon Steel Head
Hardened and Tempered for Durability

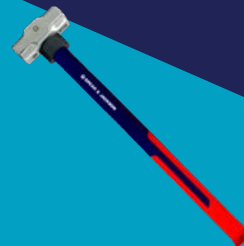
\$54¹⁵ +GST

\$62.27 INCL. GST

\$149⁹⁹ +GST

\$172.49 INCL. GST

SJ-4LBWH- 1.8kg SJ-14LBWH -6.4kg



Sledge Hammer Fibreglass Handle

3.2kg/7lb - 6.4kg/14lb
Handle length 825mm

\$85⁷⁵ +GST

\$98.61 INCL. GST

\$123⁵⁰ +GST

\$142.03 INCL. GST

SJ-SHFP7- 3.2kg SJ-SHFP14 - 6.4kg



Club Hammer Fibreglass Handle

1.4kg/3lb - 1.8kg/4lb
Tough fibreglass handle
Dual material soft grip handle

\$30⁹⁵ +GST

\$35.59 INCL. GST

\$36⁹⁵ +GST

\$42.49 INCL. GST

SJ-FGCH3- 1.4kg SJ-FGCH4 - 1.8kg

HOT DEALS!

ALLIED INTERNATIONAL

AmPro

BERNZOMATIC

v199

JAZ

Koken

OZAR

TAURUS LEATHER COMPANY

WAYCO EQUIPMENT

XCEL

Gas Torch Kit & 2 x MAP Gas Cylinder



GAST-TS4000T2K

\$163.08
+GST

\$187.54 GST Incl.

BERNZOMATIC

Socket Set 12pt 35pc

3/8"Dr x 5/16"-7/8", 9-22mm



3279AM

\$441.54
+GST

\$507.77 GST Incl.

Koken

Wire Wheel - Coated Steel

50mm x 0.3mm (Course)

WHEW-BDER9348

\$7.69
+GST

\$8.85 GST Incl.



50mm x 0.2mm (Fine)

WHEW-BDER9349

\$8.15
+GST

\$9.38 GST Incl.

60mm x 0.3mm (Course)

WHEW-BDER9448

\$8.62
+GST

\$9.91 GST Incl.

60mm x 0.2mm (Fine)

WHEW-BDER9449

\$8.77
+GST

\$10.08 GST Incl.

75mm x 0.3mm (Course)

WHEW-BDER9548

\$10.00
+GST

\$11.50 GST Incl.

75mm x 0.2mm (Fine)

WHEW-BDER9549

\$10.92
+GST

\$12.56 GST Incl.

100mm x 0.3mm (Course)

WHEW-BDERH1030

\$10.00
+GST

\$11.50 GST Incl.

JAZ

Universal Hand Brush Coated Steel

255mm x 16mm



BRUW-VIP1000F

\$7.69
+GST

\$8.85 GST Incl.

JAZ

Universal Hand Brush Brass

255mm x 16mm



BRUW-VIP1000V

\$16.31
+GST

\$18.75 GST Incl.

JAZ

Universal Hand Brush Stainless Steel

255mm x 16mm



BRUW-VIP1000Z

\$15.23
+GST

\$17.52 GST Incl.

JAZ

Cup Brush High Speed M10 Multi-Fit Thread Crimped Coated Steel

75mm x 22mm x 0.3mm



BRUH-HSC0075ER77

\$34.46
+GST

\$39.63 GST Incl.

JAZ

Cup Brush High Speed Twist Knot Grey Steel

65mm x 20mm x 0.5mm

BRUH-HST0065KM14

\$33.54
+GST

\$38.57 GST Incl.



75mm x 20mm x 0.5mm

BRUH-HST0075KM14

\$40.46
+GST

\$46.53 GST Incl.

JAZ

Lever Hoist Block

2.0 Ton, 1.5M



CHAL-W1257

\$278.77
+GST

\$320.58 GST Incl.

WAYCO EQUIPMENT

Torque Wrench

1/2"Dr (33.2-151.2 Ft/Lb)



WRET-TW4268FW

\$104.62
+GST

\$120.31 GST Incl.

WAYCO EQUIPMENT

Vernier 6" Metric & Imperial

6" x 1/16th Increments



MEAC-W1501

\$37.38
+GST

\$42.99 GST Incl.

WAYCO EQUIPMENT

Air Gravity Feed Sand Blaster



SANB-A3714

\$134.31
+GST

\$154.45 GST Incl.

AmPro

Flexible Grease Hose



300mm

HOSG-AHC7839

\$8.92
+GST

\$10.26 GST Incl.

450mm

HOSG-AHC7840

\$10.15
+GST

\$11.68 GST Incl.

OZAR

Fence Plier 250mm



P90550

\$20.15
+GST

\$23.18 GST Incl.

ALLIED INTERNATIONAL

Grubber - Double Ended with Hardwood Handle



GRUBBERD

\$43.38
+GST

\$49.89 GST Incl.

XCEL

Black H/D Belt



38mmx105cm
38.171.105

\$45.38
+GST

\$52.19 GST Incl.

38mmx110cm
38.171.110

\$45.38
+GST

\$52.19 GST Incl.

38mmx115cm
38.171.115

\$45.38
+GST

\$52.19 GST Incl.

TAURUS LEATHER COMPANY

Retractable Hose Reel

Heavy duty retractable hose reels made from durable enameled steel. High quality German manufactured rubber hose.

Comes with **FREE** Swivel bracket

FREE
Swivel
Bracket



Code	Description	Ex GST	Incl.
DB320-2-50-P300	Air Hose Reel, 15m 3/8"	\$249.00	\$286.35
DB330-2-65-P300	Air Hose Reel, 20m 3/8"	\$307.00	\$353.05
DB330-3-50-P300	Air Hose Reel, 15m 1/2"	\$316.00	\$363.40

Compressor Belt Drive

Aluminium cylinder and steel valves
Pressure switch control
High efficiency copper wound Electric motor
Aluminium delivery pipe

Regulator

93dB rating

Air receiver: 51.5 litres

Max. pressure: 9.5 bar/ 135 psi



Code	Description	Ex GST	Incl.
SPITFIRE1350N	Compressor Belt Drive, 2.5HP	\$926.00	\$1,064.90
SPITFIRE1550	Compressor Belt Drive, 3HP	\$1,007.00	\$1,158.05

C-Clamp Swivel Tip Locking Pliers

High quality, mighty CR-MO jaw
Robust Chrome Molybdenum Alloy Steel handle. Professional heat treated and machined. Wide jaws provide access to hard to reach areas. Ideal for clamping angle iron & awkward pieces. Also useful in metal working & auto body repair.



Code	Description	Ex GST	Incl.
DMAA1A06	C-Clamp Swivel Tip 6"/150mm	\$23.50	\$27.03
DMAA1A11	C-Clamp Swivel Tip 11"/275mm	\$46.00	\$52.90
DMAA1A18	C-Clamp Swivel Tip 18"/450mm	\$61.00	\$70.15

S/Driver Set 8Pc

Specially hardened & tempered SNCM+V steel round blade
High performance black hardened magnetic tip
PP+TPR material non slip grip handle.

5 slotted, 1 phillips, pozi & square



\$59⁵⁰ +GST

\$68.43 GST Incl.

GAAE0821

Hex & Torq Key Sets

Made from high grade nickel chrome molybdenum alloy steel
Satin chrome plated



GAAL0916

GAAL0918

Code	Description	Ex GST	Incl.
GAAL0915	Tamperproof Torx XL 9pc T10-T50	\$38.00	\$43.70
GAAL0916	Hex Ball Point 9pc 1.5-10mm	\$31.50	\$36.23
GAAL0918	Hex Ball Point 9pc 1.5-10mm (colour)	\$52.00	\$59.80
GAAL0923	Non Tamperproof Torx XL 9pc T10-T50	\$42.00	\$48.30
GBAL0901	Hex Ball Point 9pc 1/16"-3/8"	\$31.50	\$36.23

Professional Mechanical Tool Set 186pc

Includes 9 drawer top chest.
AF & Metric 1/4", 3/8", 1/2"
Dr Socket Sets.

Sizes: 4-32mm, 5/32" - 1 1/4".
R&OE Spanners AF & Metric
1-1/4" to 1

Designed for NZ

FREE
BIT SET



GCBZ186A

\$1,769⁰⁰ +GST

\$2,034.35 GST Incl.

Tap & Die Sets

Alloy Steel Metric and SAE
Plastic Case



SPECIAL OFFER

Code	Size	Ex GST	Incl.
1300-110000	110pc Metric	\$255.00	\$293.25
1300-115000	115pc Metric & SAE	\$255.00	\$293.25

Mechanical Torque Wrench



Code	Description	Ex GST	Incl.
ANBV0803	1/4"Dr, 5-25Nm	\$158.00	\$181.70
ANBV1206	3/8"Dr, 10-60Nm	\$166.00	\$190.90
ANBV1211	3/8"Dr, 20-110Nm	\$166.00	\$190.90
ANBV1621	1/2"Dr, 40-210Nm	\$182.00	\$209.30
ANBV1635	1/2"Dr, 70-350Nm	\$202.00	\$232.30
ANBV2460	3/4"Dr 100-600 Nm	\$529.00	\$608.35
ANBV2480	3/4"Dr, 150-800Nm	\$829.00	\$953.35
ANBV24A0	3/4"Dr 200-1000Nm	\$889.00	\$1022.35

DIN EN ISO 6789
Flip reverse action
Push lock / Pull unlock
Anti slip Handle
Dual reading

Curved Jaw Locking Pliers

Mighty CR-V jaw with cutter in design
Robust Chrome Molybdenum Alloy Steel handle
Professional heat treated and machined
Nickel plate finish



Code	Description	Ex GST	Incl.
DAAQ1A05	Locking Pliers 5"/125mm	\$20.00	\$23.00
DAAQ1A07	Locking Pliers 7"/175mm	\$27.00	\$31.05
DAAQ1A10	Locking Pliers 10"/250mm	\$29.00	\$33.35

Crimping Tool Kit 6pc

Ratchet mechanism crimper stands for superior labor saving.

Quick insertion changing of jaw without any tool.

Professional AISI 4140 Alloy Steel Crimping Jaws.

Ergonomic comfort-grip handle



\$200⁰⁰ +GST

\$230.00 GST Incl.

GGA10605

High Flow Air Blow Gun

Fast removal of chips, dust and particulate, especially in difficult to access areas.

Also suitable for cleaning & drying surfaces.

Pistol-grip handle with variable air flow trigger.



Code	Description	Ex GST	Incl.
KAGA0305	Blower Gun 125mm	\$22.00	\$25.30
KAGA0310	Blower Gun 255mm	\$26.00	\$29.90

Professional Mechanical Tool Set 186pc

Includes 9 drawer top chest.
AF & Metric 1/4", 3/8", 1/2"
Dr Socket Sets.

Sizes: 4-32mm, 5/32" - 1 1/4".
R&OE Spanners AF & Metric
1-1/4" to 1

Designed for NZ

FREE
BIT SET



GCBZ186A

\$1,769⁰⁰ +GST

\$2,034.35 GST Incl.

Circlip Plier Set 4pc HD

Circlip Retaining Ring Plier Set 4 Pce Heavy Duty 7" Plier

- 19-60mm opening capacity
Internal & external bent & straight pliers In a heavy duty canvas pouch

Chrome Vanadium Steel



\$155⁰⁰ +GST

\$178.25 GST Incl.

GPAQ0402

GREASE EQUIPMENT



BATTERY OPERATED GREASE GUN PG450

- 2 x 18V 3.0Ah Lithium-ion Rechargeable Battery Packs and charger
- Supplied with 1m long flexible extension and KY Supergrip coupler

\$586.95 EX GST
\$ 674.99 INCL



PORTABLE GREASE TRANSFER PUMP J3-01

- Height adjustable pump
- Rubber edge follower plate and lid
- Rigid extension
- Suitable for bulk filling
- J3-Hose available separately

\$600.40 EX GST
\$ 690.46 INCL



PISTOL GRIP GREASE GUN L-PG450PV

- 450g cartridge or bulk fill
- Develops 48,300 kPa (7,000 psi) on high pressure setting
- Delivers 0.5 grams per shot

\$66.24 EX GST
\$ 76.18 INCL



LEVER ACTION GREASE GUN L-LG450

- 450g cartridge or bulk fill
- Develops 69,000 kPa (10,000 psi)
- Delivers 1 gram per shot

\$51.14 EX GST
\$ 58.81 INCL

QUICK RELEASE GREASE COUPLER

- Pressures up to 10,000 psi



L-QRC BSP THREAD

\$38.88 EX GST
\$ 44.71 INCL



L-QRCXL BSP THREAD

\$57.53 EX GST
\$ 66.16 INCL

OIL EQUIPMENT



MULTI-PURPOSE LEVER DRUM PUMP A2H

- Compatible fluids: Diesel, lubricating oils up to SAE90
- Pump output: 250ml per stroke
- Drum size: 60-205L

\$135.99 EX GST
\$ 156.39 INCL



BOP 60/205L STARTER KIT BP205S-UNA

- Pump stem, Power Head, 2m Hose and gun assembly, battery pack and charger included in starter kit
- Suitable for 60-205L drums

\$680.00 EX GST
\$ 782.00 INCL



BOP INLINE METER IM012EB-01

- Suits BOP Dispense Gun
- 1/2" BSP Connections
- Four Digit Display
- Resettable Batch total

\$146.14 EX GST
\$ 168.06 INCL



HAND OPERATED OIL PUMP L-DP20J

- 1.5m of PVC hose with anti-kink springs
- Suitable for mineral oils up to SAE90 viscosity
- 340mm pump length with suction tube extender

\$ 37.03 EX GST
\$ 42.58 INCL



ROTARY VANE FUEL PUMP WITH HOSE L-RPH

- Delivers up to 20 LPM (250ml per rev)
- Suitable for diesel, kerosene and mineral oils up to SAE90
- 1.8m long delivery hose with delivery nozzle

\$118.19 EX GST
\$ 135.92 INCL

HOSE REELS



R3 COMPRESSED AIR/WATER REEL AW320B-01

3/8" x 20m

\$391.15 EX GST
\$ 449.82 INCL

AW420B-01
1/2" x 20m

\$436.48 EX GST
\$ 501.95 INCL

RETRACTA
by macnaught



AIR/WATER REELS 10MM X 15M

L-AWP1015

\$165.37 EX GST
\$ 190.18 INCL

10MM X 30M

L-AWP1030

\$255.57 EX GST
\$ 293.91 INCL



GARDEN REEL 12MM X 25M

L-DRP1225

- Inlet/Outlet: Garden Quick Connector
- PVC Hose
- Temperature 60°C
- Pressure Rating 120 psi

\$209.47 EX GST
\$ 240.89 INCL

lubemate
by macnaught

FIX THE PUNCTURE "BEFORE" IT HAPPENS!



\$19.95 ex. GST

\$76.45 ex. GST

\$22.94 incl. GST

\$87.92 incl. GST

X-TREME DIRT BIKE OFF ROAD

XTDB.050K 800ML / XTDB.090K 5L

- Will seal slits upto 9mm long
- Originally designed for motocross and enduro motorbikes but it is also recommended for mountain bikes with inner tubes.

\$22.20 ex. GST

\$76.20 ex. GST

\$25.53 incl. GST

\$87.63 incl. GST

OFF ROAD GRADE OFF ROAD

0005.030K 1250ML/0005.090K 5L

- The heavy-duty tyre sealant off road drivers prefer
- Permanently seals multiple holes up to 12mm each
- Up to 80 km/hr: 50 mph

\$29.10 ex. GST

\$99.70 ex. GST

\$33.47 incl. GST

\$114.66 incl. GST

QUAD AND ATVS OFF ROAD

L034.030K 1250ML/L034.090K 5L

- Tested and used in team racing by Polaris France
- Seals holes up to 7mm
- For on-road and off-road Quad, Side-by-Side & ATV use



\$24.10 ex. GST

\$99.70 ex. GST

\$27.72 incl. GST

\$114.66 incl. GST

MOTORCYCLE ON ROAD

MCYCL.050K 800ML / MCYCL.090K 5L

- 800ml Bottle: treats 1 bike.
- Suitable for regular & touring tubeless bikes, mopeds & scooters

\$99.70 ex. GST

\$392.95 ex. GST

\$114.66 incl. GST

\$451.89 incl. GST

TRUCK & BUS ON ROAD

L008.090K 5L / L008.020K 25L

- For trucks, semi-trailers, buses & coaches
- Seals holes up to 8mm: also extends tyre life by 20%+

\$24.10 ex. GST

\$62.10 ex. GST

\$27.72 incl. GST

\$71.42 incl. GST

MOBILITY & E-SCOOTERS ON ROAD

L035.040K 1L / L035.090K 5L

- From its 1 Litre bottle, you will have more than enough for any two, three or four-wheeled mobility vehicle.



What is OKO?

OKO products are viscous fluids, designed to combat the costly inconvenience of suffering punctures. OKO Tyre sealants eliminate most puncture problems – instantly.

Find out more



FAST CUT



FLEXOVIT STEEL & STAINLESS PORTABLE CHOP SAWS

- 356 x 3.0 x 25.4mm
- Fast cutting of ferrous metals and stainless steel
- 406mm wheels suitable for use on Flexovit Mitrecut machine
- Cut off Wheels to suit Low Speed Electric Chop Saws. (Such as Makita, Hitachi, Ryobi, Dewalt, Milwaukee, Metabo etc).

\$11.93
+GST

\$13.72 Incl. GST
66252841617

LONG LIFE

FLEXOVIT STEEL & STAINLESS MEGA INOX

- 230 x 1.9 x 22.23mm
- Ultra thin fast cut reinforced straight wheel for fast cutting off where minimal material loss is desired
- For stainless steel, alloy steels & hard ferrous metals

\$4.85
+GST

\$5.58 Incl. GST
66252841601



LONG LIFE

FLEXOVIT METAL MEGALINE

- General Purpose
- For cutting ferrous metals and stainless steel
- Excellent performance and life



Code	Description	+GST	Inclusive
66252841561	125 x 2.5 x 22.23mm	\$2.24	\$2.58
66252841566	180 x 2.5 x 22.23mm	\$4.34	\$4.99
66252841574	230 x 2.5 x 22.23mm	\$5.08	\$5.84

40% LONGER LIFE*



FLEXOVIT MAXX STEEL & STAINLESS CUT OFF DISC

- 125 x 1.0 x 22.23mm
- Flexovit MAXX ultra thin cut off wheels are specifically developed using new Bond Technology in combination with new NorZon Plus grain for cutting stainless, alloy and carbon steels

\$2.85
+GST

\$3.28 Incl. GST
66252837155

40% LONGER LIFE*



FLEXOVIT MAXX STEEL & STAINLESS TUB OF 100 CUT OFF DISCS

- 125 x 1.0 x 22.23mm
- Ultra thin fast cut reinforced straight wheel for fast cutting off where minimal material loss is desired
- For stainless steel, alloy steels, cast iron, tool steel & hard ferrous metals

\$265.70
+GST

\$305.56 Incl. GST
66252839638

COMFORT

NORTON LEATHER RIGGER GLOVES

- Large size gloves
- Comfort and breathability
- One size fits all



\$8.35
+GST

\$9.60 Incl. GST
66252841423*

*Limited stock, available while stock lasts

IDEAL FOR STAINLESS STEEL

FLEXOVIT FLEXIBLE GRINDING WHEEL

- 125 x 3.0 x 22.23mm
- WA46 aluminium oxide grain
- For stainless steel and hard ferrous metals
- Excellent depressed centre light weight grinding and polishing wheel

\$4.33
+GST

\$4.98 Incl. GST
66252841801



FAST CUT

FLEXOVIT METAL GRINDING

- 125 x 6.8 x 22.23mm
- For grinding ferrous metal welds and structural steels
- Excellent performance and life
- General purpose grinding

\$3.67
+GST

\$4.22 Incl. GST
66252841682



HIGH REMOVAL RATE

FLEXOVIT STEEL & STAINLESS - GRINDING

- 125 x 6.8 x 22.23mm
- For grinding stainless steel and hard ferrous materials
- Free of Iron, Sulphur and Chlorine

\$3.84
+GST

\$4.42 Incl. GST
66252841744



COOL CUTTING

NORTON BLAZE F980 FIBRE DISCS

- Extra heavy vulcanised fibre backing
- Improved resin system for better grain adhesion
- Ideal for stainless and hard to grind metals



FAST CUT

NORTON ALUMINIUM OXIDE FIBRE DISCS

- 125 x 22mm
- Full resin bond for strength and durability
- Fibre backing for strength and tear resistance

\$1.42
+GST

\$1.63 Incl. GST
66623324062



FIND OUT MORE BELOW



Code	Description	+GST	Inclusive
78072743400	115 x 22mm C36	\$3.17	\$3.65
78072743401	125 x 22mm C36	\$3.67	\$4.22
78072743402	180 x 22mm C36	\$8.34	\$9.59

**Compared to 66252919991

RICHMOND[®] ROLLING SOLUTIONS

PROVIDING ROLLING SOLUTIONS
TO NZ FOR OVER 25 YEARS



LUG BOXES

Food grade approved and stackable, so that they may be used as meat crates, seafood crates, pet travel crates, poultry crates, or simply as fresh produce crates.

- High-density polyethylene
- 66 Litre capacity
- Exterior dimensions: 610mm x 425mm x 320mm
- Food grade



BXR008RWCRED



BXR008RWCBLK



Richmond also manufacture lids to be used with our lug boxes (available separately)

\$55.40
EX. GST

\$63.71 INC. GST

GARDEN CART ATR001

Designed to connect to either a ride on mower or ATV, this lightweight garden cart has many uses whether you are a hobby farmer, garden supply business, sporting club or just simply looking for an easier, hassle-free way of moving a load.

- 240 Litre Tray Volume
- 200kg Carry capacity
- Draw Bar Length 830mm

\$519.00
EX. GST

\$596.85 INC. GST



400MM PLASTIC CENTRED PNEUMATIC WHEEL | 1" AXLE DIAMETER PN1627-1FL

- Corrosion and rust resistant rim
- Suitable for applications in wet/damp, environments including: Nursery Trolleys & Equipment, Hand Trucks Agricultural Equipment
- Economic alternative to steel rimmed pneumatics
- Tyre & tube also sold separately



\$59.95
EX. GST

\$68.94 INC. GST

STEEL TRAY WHEELBARROW WIDE PNEUMATIC PLASTIC WHEEL WBR202

- 100 Litre volume
- 200 kg load capacity
- rubber handles
- Steel Tray

\$257.15
EX. GST

\$295.72 INC. GST



PLASTIC TRAY WHEELBARROW WITH NARROW PLASTIC CENTRED PNEUMATIC WHEEL WBR100

- 100 Litre volume
- 150 kg load capacity
- rubber handles

\$228.60
EX. GST

\$262.89 INC. GST



WASTE BIN CASTOR SET WITH RED POLY TYRED CAST IRON WHEELS (WASTESETT-5)

sold in sets of 4, these castors are built to withstand the tough conditions of waste management. Frequently seen on bulk bins and skips, this range features malleable iron wheels or polyurethane tyred wheels to maximise surface protection.

- 150mm wheel diameter
- Roller bearings
- 1000kg max load capacity (over 4 castors)



\$176.95
EX. GST

\$203.49 INC. GST

LIGHT INDUSTRIAL CASTORS

This series of castors is the ultimate choice for medium-duty applications. It offers a wide range of wheel types to suit different floor surfaces and load requirements.

- 100mm wheel diameter
- Zinc plated frame
- Rebound rubber wheel
- 100kg max load capacity
- Ball bearings

Product Code	Frame Type	Price (Ex. GST)	Price (Inc. GST)
R4405	Rigid	\$16.42	\$18.88
S4404	Swivel	\$20.90	\$24.04
S4404B	Swivel & Brake	\$24.18	\$27.81



UTILITY PLATE MOUNT CASTORS

These plate mounted castors are ideal for light duty applications including wire baskets, display equipment and light trolley applications. They feature a corrosion resistant zinc plated finish in a pressed metal construction.

- 75mm wheel diameter
- Zinc plated frame
- Institutional rubber wheels
- 50kg max load capacity
- Ball bearing

Product Code	Frame Type	Price (Ex. GST)	Price (Inc. GST)
R3711	Rigid	\$6.65	\$7.65
S3710	Swivel	\$8.81	\$10.13
S3710B	Swivel & Brake	\$10.95	\$12.59



Screw Extractor Set 10 Piece

- Aggressive left hand spiral for extra gripping power
- Square end for hand operation in a variety of holders
- Spiral flutes designed to embed themselves deeper, therefore as fastener resistance increases the extractor's grip increases
- Made from Carbon Steel

Part No. M603S20L

\$87.50
+ GST
\$100.63 GST Incl.



Panel Drill Tupoint 10 Pack

Sutton Tools Silver Bullet Panel Drills are developed to drill holes for rivets in flat and curved panels used in sheet metal fabrication.

The double ended design doubles the life of the drill bit.

Size (mm)	Diameter	Part No.	Ex GST	Incl.
3.18	1/8	D1340318	\$30.65	\$35.25
4.09	#30	D1340326	\$30.65	\$35.25
4.09	#20	D1340409	\$34.60	\$39.79
4.85	#11	D1340485	\$42.55	\$48.93



Hacksaw Frame – Soft Grip

Sutton Tools Hacksaw Frames are professional, ergonomically designed for two handed operation, and constructed from sturdy anodised aluminium.

- Non-slip ergonomic soft grip handle
- Durable one piece body for ultra-high tension
- Adjustable tension mechanism

Part No. H3150300

\$27.95
+ GST
\$32.14 GST Incl.



Hacksaw Blades – Bi-Metal HSS

Evacut Bi-Metal HSS Hacksaw Blades are shatterproof, with superior cutting power & flexibility.

All Evacut hacksaw blades have 300mm pin hole centers to fit all standard size hacksaw frames.

Size (mm)	Size (Inch)	TPI	Part No.	Ex GST	Incl.
300 x 13	12 x 1/2"	18TPI	255858	\$2.60	\$2.99
300 x 13	12 x 1/2"	24TPI	255866	\$2.60	\$2.99
300 x 13	12 x 1/2"	32TPI	255874	\$2.60	\$2.99

Evacut
PRECISION CUTTING TOOLS



HSS Step Drill

For use in sheet metal, aluminium, plastic & fibre glass, ideal for sheet metal without pre-drilling.

During drilling, the next step deburrs the previously drilled hole.

- Made from HSS: Constructed from M2 high speed steel offering the best combination of strength, heat & wear resistance.

Range (mm)	Steps	Part No.	Ex GST	Incl.
4-20MM	9	D50442009	\$49.20	\$56.58
4-30MM	14	D50443014	\$88.50	\$101.78
6-36MM	11	D50463611	\$134.10	\$154.22



Long Series Drill Set 6 Piece

Sutton Tools Long Series Drills offer longer flute & overall length than standard drill bits.

- 118° Standard Point - For general purpose applications
- Precision Ground Flute - Designed for fast chip removal
- Made from M2 High Speed Steel (HSS) - Offering the best combination of strength, heat & wear resistance

Part No. D1100006

\$75.90
+ GST
\$87.29 GST Incl.

Ultra Gas 400G - 3 Pack

- Skinny cartridge for easy handling
- Faster heat transfer than propane gas
- Burns at 1982°C (3600°F)
- 400g capacity
- EN ISO 11118 compliant

Part No. JP326439PK

\$76.50
+ GST
\$87.98 GST Incl.

Carbide Burr 5 Piece Set

- Double cut burrs for rapid stock removal in harder materials
- 6mm shank made from S45C Steel
- Made from solid carbide, offering the ideal combination of hardness & toughness for high speed applications

Part No. 918CRSET5M

\$243.50
+ GST
\$280.03 GST Incl.

Diamond Tip Mini Engraver

Handy pocket engraver easily marks glass, ceramic, plastic and hardened metals.

Long lasting diamond tip

Suitable for personalising toys, sport equipment, tools, appliances, gifts and trophy's.

Sykes-Pickavant



680004

\$56.70
+ GST

\$65.21 GST Incl.

Stainless Steel Rule

Manufactured from stainless steel

Length: 150mm

Width: 20mm

Thickness: 1.0mm

Graduation upper edge: 1mm

Graduation lower edge: 0.5mm

Numerical markings on front side in centre counting from left to right



Code	Size	Ex GST	Incl.
150SP	150mm	\$9.75	\$11.21
300SP	300mm	\$18.30	\$21.05

Combination Square Set 300mm

Versatile and useful multi-application set for a wide range of measuring and lay out jobs. Suitable for use as a rule, spirit level, plumb level, 45° level, try square (internal and external), height/depth gauge, marking gauge and scriber.

Supplied in high grade EVA foam storage tray.

FAMOUS TOLEDO



322210

\$99.15
+ GST

\$114.02 GST Incl.

Blow Torch & Lighter Torch

Blow Torch: Professional blow torch suitable for automotive, industrial, plumbing and electrical work. Flame temperature 1000-1100°C

Lighter: Easily store in workshop toolbox, kitchen drawer or as part of camping kit essentials. Ignition: Self-ignition piezo Gas type: Butane

Code	Size	Ex GST	Incl.
302090	Blow Torch Butane	\$54.10	\$62.22
302091	Precise Lighter Torch	\$18.40	\$21.16

FAMOUS TOLEDO



Hydraulic Crimper 4-70mm²

Comes with eight sets of interchangeable dies (4, 6, 8, 10, 16, 25, 35, 50, 70mm² dies)
Suits lug size 4mm- 70mm²
Overall length 320mm
Up to 45KN crimping force
Stroke- 10mm



MA2340

\$116⁹⁵ +GST

\$134.03 GST Incl.

Chisel & Punch Roll 11pc

Set of 11 chisels and punches in handy canvas tool roll with clip.
Quality German Manufactured Product.



REN02

\$165⁹⁵ +GST

\$190.84 GST Incl.

Pin Punch Set 8pc

Set of one taper and seven parallel pin punches in durable fabric wallet
Pouches are made from high quality fabric that can withstand the weight of heavy items. Clear plastic cover allows the user to clearly see the contents.



RTP8

\$66⁴⁵ +GST

\$76.42 GST Incl.

Cold Chisel Set 3pc

Set of three flat cold chisels in durable fabric wallet
Pouches are made from high quality fabric that can withstand the weight of heavy items
Clear plastic cover allows the user to clearly see the contents
With sizes 150, 200, 250mm.



RCC3

\$53⁶⁵ +GST

\$61.70 GST Incl.

Digital Vernier Caliper, 0 - 150mm/6"

Thumb wheel for fine adjustment
ABS/INC measurement
Large LCD display
On/off Switch
Zero Point at any Position
Displays Values in mm and Inch
All Metal Parts Made of Hardened



MW-110-15DBL

\$133⁹⁰ +GST

\$153.99 GST Incl.

Digital Vernier Caliper, 0 - 150mm/6"

Range: 0-150mm (6")
Resolution: 0.01mm (0.0005")
Accuracy: ± 0.03mm (0.0015")
Standard: Factory Standard
Jaw length: 40mm
High Measuring Speed:
120" per second
4-way measurement



MW-110-15DFC

\$135⁵⁰ +GST

\$155.83 GST Incl.



\$22.95 +GST
\$26.39 INC GST

Rapidstick™ Gasket Sealants, 50ml

8510 • Rigid Bonding

- Medium strength gel
- Resists chemicals
- Temps up to +205°C
- Fills gaps to .20mm

Part No: 8510-50

8515 • Flexible

- Machined surfaces
- Fast curing gel
- Fills gaps to .40mm

Part No: 8515-50

Rapidstick™ Cyanoacrylate Instant Adhesives, 25ml

8401 • Surface Insensitive

- Ideal for repair applications
- Medium viscosity
- Fills gaps up to .20mm

Part No: 8401-20

8406 • Wicking Grade

- Rubber & metal bonding
- Low viscosity
- Fills gaps up to .05mm

Part No: 8406-20



\$11.59 +GST
\$13.33 INC GST



Rapidstick™ Thread Sealants, 50ml

8567 • Coarse Fittings

- Contains PTFE
- Temps up to +204°C
- For all metal types

Part No: 8567-50

8577 • Water & Gas

- All threads
- Soft setting
- AGA Approved for Gas

Part No: 8515-50

\$22.95 +GST
\$26.39 INC GST



\$22.95 +GST
\$26.39 INC GST



Rapidstick™ Retaining Compounds, 50ml

8609 • Tight Gaps

- Meets Military Specs: MIL-R-46082B, Type I
- For all metal types

Part No: 8609-50

8680 • Mild Grease & Oil Contamination

- For active metals & passive substrates

Part No: 8680-50

GalMax™

GAME CHANGING GAL PAINTS

GalMax™ NPR Coloured Galvanising Paint, 400g

- Can be used direct to metal with or without primer
- Maintains and restores damaged or worn galvanised structures & equipment
- Dries to a smooth & durable rust fighting finish
- Excellent adhesion: metal/concrete/ceramics + MORE



\$18.63 +GST
\$21.42 INC GST

\$17.10 +GST
\$19.67 INC GST

John Deere® Green: CT-JDSG-400

Caterpillar® Yellow: CT-CYSG-400

Massey Ferguson Red: CT-MFRSG-400

NEW COLOUR!

Ford Blue:

CT-FBSG-400

RAZORWELD

ARC140

RAZORWELD ARC140 140 AMP - 240 VOLT HIGH OCV 78V

BRAND NEW MODEL

- MMA (stick electrode) - VRD
- Hot Start, Arc Force
- DC-TIG - Lift Arc Ignition
- Generator Compatible
- Compliant to AS/NZ 60974-1



Power Supply	240V - 1Ph
Duty Cycle @ 40°C	20% @ 140A
@ 25°C	40% @ 140A
Current Range MMA	20 - 140A
Current Range TIG	10 - 140A
OCV (VRD Off)	78V
Weight	5.5kg

XA-RZARC140-K

\$533⁰⁴
+GST

\$613.00 GST Incl.

C/w 4m Arc Set (incl. Twist Type Electrode Holder), Tig Torch is Optional and Extra

RAZORCUT

CUT45PFC

PLASMA CUT45 PFC 45 AMP PLASMA CUTTER CLEAR VISION TECHNOLOGY



- 16mm Clean Cut on Steel
- 25mm Sever Cut on Steel
- PFC - Power Factor Correction
- Pilot Arc Low Frequency Start
- 4T Function for Automatic use
- Compliant to AS/NZ 60974-1



Power Supply	240V - 1Ph
Duty Cycle @ 40°C	25% @ 45A
@ 25°C	60% @ 30A
Rated Input Power	5.3KVA
Air Flow Draw	6.7cfm
Air Pressure	75psi
Weight	10kg
Dimensions (mm)	546x166x341

XA-RZCUT45PFC-K

\$1,633⁹¹
+GST

\$1,879.00 GST Incl.

C/w 6m SC80 Suregrip™ Plasma Torch, Earth Lead and Spares.

VIPER

VIPER MIG185 185 AMP MIG/TIG/MMA



- MIG Gas/Gasless
- Digital Meters
- Spool Gun Ready
- Burn Back Control
- DC Lift Arc TIG
- Hot Start Electrode



Power Supply	230V - 1Ph
Duty Cycle @ 40°C	10% @ 185A
@ 25°C	25% @ 185A
Amp Range MIG	30 - 185A
Amp Range TIG/MMA	10 - 160A
Rated Power	5.7KVA
Weight	13.5Kg
Certification Approval	AS/NZ 60974-1

XA-MIG185V-K

\$980⁰⁰
+GST

\$1,127.00 GST Incl.

C/w M15 Series Mig Torch, Arc Set x 3m, Twin Gauge Argon Regulator. Tig Torch is Optional and Extra

RAZORWELD

TIG320ACDC

RAZORWELD TIG320 AC/DC TIG/MMA INVERTER WELDER REVOLUTIONARY DESIGN



- DC TIG
 - HF or Lift Arc Start
 - Full Weld Sequence Controls
 - Full Digital Pulse Controls
- AC TIG
 - HF or Lift Arc Start
 - Full Weld Sequence Controls
 - Full Digital Pulse Controls
 - Multiple AC Wave Forms
 - AC Frequency Adjustability
 - Synergic AC Balance Control
- MIX ARC TIG
 - AC weld current mixed with DC
 - Increased penetration & weld speed
 - AC/DC Mix Hz Adjustability
 - AC/DC Mix Cycle Width %
 - Use with multiple AC Wave Forms
- Digital Weld Sequence Control
 - Pre and Post-Gas Time
 - Start & Finish Current
 - Up-Slope & Down-Slope
 - 2T/2S, 4T/4S Trigger Latch
 - Job Memory Storage & Recall
 - Spot Timer function
- Digital Pulse Controls
 - Peak & Base Current Select
 - Pulse Frequency Adjustability
 - Pulse Width % Adjustability
- MMA (Stick Electrode)
 - DC and AC Current Options
 - Ignition Start Current Adjustability
 - Ignition Timer Control
 - Arc Force Control
- Accessories / Features
 - Integral Water-Cooler Included
 - 8mtr ARC T4W Tig Torch Included
 - Torch rating 280 Amps AC @ 100%
 - Remote Amp Control Options



Power Supply	415V - 3 Phase
Duty Cycle @ 40°C	30% @ 320A TIG
	30% @ 270A MMA
Current Range TIG	10 - 320A
Current Range MMA	10 - 270A
Rated Input Power	10 kVA
Certification Approval	AS/NZ60974-1

RAZORWELD

TIG220PFC

RAZORWELD TIG220 PFC 220 AMP DC TIG/MMA CLEAR VISION TECHNOLOGY



- Complete Pulse Function
- 2T/4T Trigger, Spot Time
- Start & Final Current Control
- Pre & Post Gas Flow Control
- Up & Down Slope Control
- Arc Force Control
- Generator Compatible
- Compliant to AS/NZ 60974-1



Power Supply	240V - 1Ph
Duty Cycle @ 40°C	20% @ 220A
@ 25°C	40% @ 220A
Current Range MMA	20 - 160A
Current Range TIG	5 - 220A
OCV (VRD Off)	68V
Rated Output	5A/10.2V - 220A/18.8V
Weight	8.9kg

XA-RZTIG220PFC-T2

\$1,666⁰⁹
+GST

\$1,916.00 GST Incl.

C/w ARC T2FX x 8m Flexi TIG Torch, Arc Set x 4m, Argon Flowmeter Regulator

RAZORWELD



XA-TIG320RZ ACDC-K

\$6,813⁰⁴
+GST

\$7,835.00 GST Incl.

COMPLETE PACKAGE DEAL

Comprises RAZORWELD TIG320ACDC Power Source, Water Cooler, Machine Trolley, ARC T4W Water Cooled Tig Torch x 8m with Starter Kit, Earth Lead x 4m, Arc Lead x 4m, Argon Flowmeter Regulator.



VIPER ARC160

160 AMP - 230 VOLT MMA DC WELDER

- DC Stick Electrode
- Scratch Start TIG
- 20-160 Amps
- Generator Compatible - 8.0KVA
- Electrode Hot Start
- Lightweight & Portable

Power Supply 230v - 1Ph
 Duty Cycle @ 40°C 15% @ 160A
 @ 25°C 40% @ 160A
 Current Range 20 - 160A
 Rated Power 8.0KVA
 Weight 4.0Kg



XA-VA160-BK

\$3330⁴ +GST

\$383.00 GST Incl.

C/w 2.5m Arc Lead Set, Welding Gloves, Chipping Hammer and AS100B Welding Helmet

BUNDLED PACKAGE DEAL



AS6000F AUTOMATIC HELMET

100MM x 60MM VIEWING AREA



- MIG/MMA/TIG Compatible
- Replaceable Battery & Solar Powered
- Large Viewing Area - 100mm x 60mm
- 4 Arc Sensors
- Grind Mode Function
- Variable Shade 4/9-13
- Sensitivity & Delay Controls
- Classification 1/1/1/2
- Compliant to AS/NZS 1338.1



AS6000F

\$1730⁴ +GST

\$199.00 GST Incl.

XA-5001 ADF CONTROLS



AS8000D AUTOMATIC HELMET

WITH LARGE VIEWING AREA



- 1/1/1/1 Classification
- 100x83.4mm View Size
- External Grind Button
- 4 Arc Sensors
- Memory States
- 5-13 Shade Control
- 4 Point Harness
- Back-up Battery
- Standards - AS/NZS 1337.1 B (High Impact)
AS/NZS 1338.1 (Auto-Darkening)



External Grind Button



AS8000D

\$2843⁵ +GST

\$327.00 GST Incl.



FIBRE WELDING BLANKET

HEAT & FLAME RESISTANT UP 1,000°C

The Xcel-Arc Fibre Welding Blanket, made from pre-oxidized carbon fiber, protects against sparks and spatter, and serves as a heat shield and thermal insulator.

Highly Flexible, can be draped over, wrapped around, or pushed into objects.



XA-FWB1818

\$1900⁰ +GST

\$218.50 GST Incl.

NEW LIGHTWEIGHT & FLEXIBLE WELDING BLANKET



TIG/RIGGERS WELDING GLOVES

DUAL PURPOSE TIG GLOVES

Dual-purpose TIG/Riggers gloves made with premium goat hide leather, Kevlar stitching, and reinforced side patches for durability. Cotton-lined palms reduce fatigue, while superior fingertip sensitivity enables accurate welds. Soft but robust, suitable for rigging and general industrial work.

XA-10-2670-L
XA-10-2670-XL

XcelArc TIG/Riggers Gloves, Large
XcelArc TIG/Riggers Gloves, X Large



\$260⁸ +GST

\$29.99 GST Incl.



ALUMINISED HEAT REFLECTIVE

FOR PROLONGED WELDING

Aluminised PFR Rayon heat reflective backhand provides prolonged radiant heat protection during welding. The aluminised Herringbone pattern reflects 95% of radiant heat. The unique 3 dimensional finger construction offers unrestricted mobility & sensitivity of fingers.

XA-10-2755-L
XA-10-2755-XL

Large
X-Large



\$400⁰ +GST

\$46.00 GST Incl.



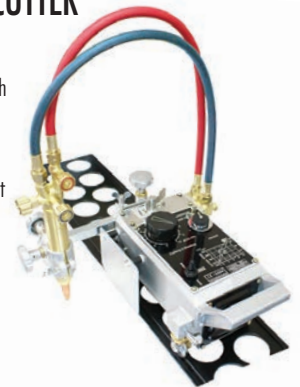
TRACKER CG30 TRACK CUTTER

WITH 1.8M LENGTH OF TRACK

A stepless variable speed carriage with oxy/fuel gas cutting torch mounted on a straight line track.

Built to industrial standards provides high quality oxy/fuel cuts on steel plates and structures where straight line accuracy is paramount. With addition of the CG30 Circle Cutting Attachment the CG30 will cut circles with a high degree of accuracy.

Power Supply/Phases (V-Ph)	240 - 1
Input Frequency (Hz)	50
Cutting Speed (mm/min)	150-800
Cutting Range (mm)	3-300
Motor Speed (r.p.m)	1500
Reduction Gear	Single Cone
Direction	Bi-directional
Wheel distance apart (mm)	160
Dimensions (mm)	350x140x175



XG-CG30

\$1,565²² +GST

\$1,800.00 GST Incl.

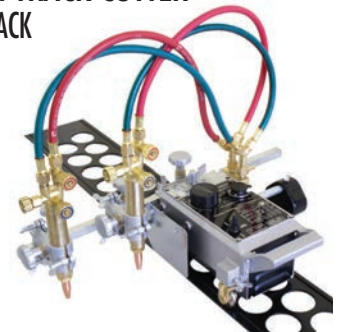


TRACKER CG30 TWIN TRACK CUTTER

WITH 1.8M LENGTH OF TRACK

The TRACKER CG30 TWIN is a variable speed, twin-torch carriage designed for precise oxy/fuel cutting on steel plates and structures. This machine delivers high-quality, straight-line cuts and, with the CG30 Circle Cutting Attachment, it can accurately cut circles and flanges. Renowned worldwide, the CG30 TWIN offers an affordable, high-quality solution for portable cutting needs in the industry.

Power Supply/Phases (V-Ph)	240 - 1
Input Frequency (Hz)	50
Cutting Speed (mm/min)	150-800
Cutting Range (mm)	3-300
Motor Speed (r.p.m)	1500
Reduction Gear	Single Cone
Direction	Bi-directional
Wheel distance apart (mm)	160
Dimensions (mm)	350x140x175



XG-CG30-TWIN

\$1,782⁶¹ +GST

\$2,050.00 GST Incl.

BE THE POWER YOU NEED.

COLD WATER BLASTERS

2,175 PSI @ 8 L/MIN

1.6 kW, 240 V Induction
2,800 RPM, 240 V, 10 A
Comet pump, 8 m hose on reel

*Accessories, surface cleaner, 10 m drain cleaning hose, turbo lance, Vario lance, gun, detergent injection

\$550⁰⁰ + GST

\$632.50 GST INCL.



102 KLS1680

2,700 PSI @ 9.4 L/MIN

Powerase 7.5 hp engine
AR pump, Detergent tank,
8 m hose, gun, & lance inc.

\$599⁰⁰ + GST

\$688.85 GST INCL.



120 PP2770A-R

**BONUS
SURFACE
CLEANER**

3,200 PSI @ 11.3 L/MIN

Powerase 7.5 hp engine
AR pump, 7.5 m hose, 4 x QC
nozzles, gun & lance

\$1,065⁰⁰ + GST

\$1,224.75 GST INCL.



120 BAR3270A-R

**BONUS
TURBO
NOZZLE**

4,000 PSI @ 15 L/MIN

Powerase 15 hp engine
Electric start, AR pump
15 m hose, 4 x QC nozzles
gun & lance

\$1,799⁰⁰ + GST

\$2,068.85 GST INCL.



120 BAR4015A-R

**BONUS
SURFACE
CLEANER**

HOT WATER BLASTER

2,030 PSI @ 7.0 L/MIN

2.2 kW, 230 V, 2800 RPM
Motor, Comet pump,
0-90°C, 8 m hose, gun,
lance, nozzle

\$1,999⁰⁰ + GST

\$2,298.85 GST INCL.



107 Patriot 140

**BONUS
FOAM
LANCE KIT**

LOG SPLITTER

20 TONNE LOG SPLITTER

Powerase 7.5 hp engine
Compact unit
3,000 psi max

\$1,500⁰⁰ + GST

\$1,725.00 GST INCL.



LS20HTLG-R225

INVERTER GENERATORS

2,000W, 4 L FUEL TANK

4+ hrs @ 100% load
Petrol 80 cc electric start
12 V 8.3 A DC output
1 x 15 A outlet

\$1,295⁰⁰ + GST

\$1,489.25 GST INCL.



G2000I-RE

3,500W, 8.5 L FUEL TANK

5+ hrs @ 100% load
Petrol 212 cc electric start
12 V 8.3A DC output
2 x 15 A outlets

\$1,899⁰⁰ + GST

\$2,183.85 GST INCL.



G3500I-RE

7,500W, 22 L FUEL TANK

9+ hrs @ 100% load
15 hp Powerase engine
Recoil/Electric start w/ remote
2 x 15 A IP66 Outlets & RCD

\$3,650⁰⁰ + GST

\$4,197.50 GST INCL.



123 G8000I-RE

WATER PUMPS

1" WATER TRANSFER PUMP

1" BSP Outlet, Aluminum body
133 L/min flow, 28 m head,
7 m suct, 3 hp Powerase
R80 Petrol engine, Viton seals

\$330⁰⁰ + GST

\$379.50 GST INCL.



WP1025-R

1" WATER/DIESEL TRANSFER PUMP

1" BSP Outlet, Aluminum body
125 L/min, 30 m head, 7 m suction
1.0 hp Honda GX25 Petrol engine
Viton seals

\$699⁰⁰ + GST

\$803.85 GST INCL.



BW115HT

SWEEPER

SWEEPER C/W FILTER

Cleaning capacity: 3,680 m²/hr
Sweeping path: 950 mm
Waste hopper: 40 L

\$660⁰⁰ + GST

\$759.00 GST INCL.



BAR950

DIESEL TANKS

DIESEL CUBE TANK 210 L

210 L UV stabilized diesel poly tank
4 m of 19 mm (3/4") delivery hose
40 LPM open flow
12 V diesel fuel pump

\$980⁰⁰ + GST

\$1,127.00 GST INCL.



DD210

DIESEL TANK 500 L

500 L UV stabilized diesel poly tank
4 m of 19 mm (3/4") delivery hose
40 LPM open flow
12 V diesel fuel pump

\$1,549⁰⁰ + GST

\$1,781.35 GST INCL.



DD500

DIESEL TANK 1,000 L

1,000 L UV stabilized diesel poly tank
4 m of 19 mm (3/4") delivery hose
40 LPM open flow
12 V diesel fuel pump

\$1,895⁰⁰ + GST

\$2,179.25 GST INCL.



DD1000

SPRAYERS

HANDHELD SPRAYER 2 L

90.702.002

\$15⁰⁰ + GST

\$17.25 GST INCL.



HANDHELD SPRAYER 8 L

90.702.008

\$39⁰⁰ + GST

\$44.85 GST INCL.



BACKPACK SPRAYER 16 L

90.704.016

\$79⁰⁰ + GST

\$90.85 GST INCL.

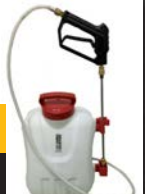


12 V BACKPACK SPRAYER

G518VS-10BS

\$289⁰⁰ + GST

\$332.35 GST INCL.



ATV 12 V, 56 L SPRAYER

90.700.150

\$199⁰⁰ + GST

\$228.85 GST INCL.



ATV 12 V, 95 L, SPRAYER WITH BOOM

90.713.250

\$599⁰⁰

\$688.85 GST INCL.



ATV 12 V, 150 L, SPRAYER WITH BOOM

RTVMS40

\$999⁰⁰ + GST

\$1,148.85 GST INCL.



ATV 12 V, 227 L, SPRAYER WITH BOOM

RTVMS60

\$1,395⁰⁰ + GST

\$1,604.25 GST INCL.



95 L, 12 V SPRAYER WITH TRAILER & BOOM 90.800.250

\$789⁰⁰ + GST

\$907.35 GST INCL.





THE
CALIPER

NZ'S INDUSTRIAL SUPPLY SPECIALISTS

REGISTER FOR YOUR
FREE DIGITAL
CALIPER
Magazine



Shop Online....Everywhere you need us to be!
www.tradezone.co.nz

TradeZone Dargaville
89 Normanby Street
09 439 7335

TradeZone Tokoroa
66 Chambers Street
07 886 1700

TradeZone Hawera
8 Nelson Street
06 278 4185

TradeZone Rangiora
326 Flaxton Road
03 313 3425

TradeZone North Shore
3B Cowley Place, Rosedale
09 414 7214

TradeZone Taupo
8 Curly's Way
07 377 2248

TradeZone Whanganui
362 Heads Road
06 344 4804

TradeZone Hornby
278B Main South Road
03 343 6345

TradeZone Avondale
6 Fremlin Place
09 828 4928

TradeZone Mt Maunganui
79B Hull Road
07 575 0504

TradeZone Palmerston Nth
711 Tremain Ave
06 357 8888

TradeZone Ashburton
146 South Street
03 308 3147

TradeZone Pukekohe
139 Manukau Road
09 238 1800

TradeZone Rotorua
33 Depot Street
07 347 9110

TradeZone Masterton
300 High Street
06 370 0390

TradeZone Timaru
12A Heaton Street
03 684 7036

TradeZone Thames
308 Pollen Street
07 868 6608

TradeZone Whakatane
26 Te Tahi Street
07 308 6937

TradeZone Blenheim
50 Grove Road
03 577 2040

TradeZone Oamaru
36 Orwell Street
03 434 6956

TradeZone Frankton
25 Somerset Street
07 847 4994

TradeZone Gisborne
6 Tupaea Street
06 868 8214

TradeZone Nelson
35 Quarantine Road
03 547 8000

TradeZone Invercargill
168 Dee Street
03 218 2059

TradeZone Te Awamutu
1317 Alexandra Street
07 871 7062

TradeZone Napier
69 Austin Street
06 842 2304

TradeZone Takaka
46 Motupipi Street
03 525 9575

Find your local
TradeZone outlet



TradeZone Morrinsville
Unit 2 / 144 Thames Street
07 889 7681

TradeZone Hastings
506 Queen Street West
06 870 4450

TradeZone Westport
26 Wakefield Street
03 789 7033

TradeZone Matamata
62 Firth Street
07 888 4405

TradeZone New Plymouth
172 Gill Street
06 758 5133

TradeZone Greymouth
10 Boudry Street
03 768 5720